

1 **Effects of Fermented Wheat Germ Extract on oral cancer cells: an in vitro study.**

2
3 Khrystyna Zhurakivska¹, Maija Risteli², Tuula Salo³, Davide Sartini⁴, Alessia Salvucci⁵,
4 Giuseppe Troiano⁶, Lorenzo Lo Muzio⁷, Monica Emanuelli⁸

5
6 ¹ Department of Clinical and Experimental Medicine, University of Foggia, Via Rovelli 50, Foggia
7 71122, Italy; khrystyna.zhurakivska@unifg.it

8 ²Cancer and Translational Medicine Research Unit, Faculty of Medicine, University of Oulu, Oulu,
9 Finland; Medical Research Center Oulu, Oulu University Hospital, University of Oulu, Oulu,
10 Finland. Electronic address: maija.risteli@oulu.fi; maija.risteli@oulu.fi

11 ³Cancer and Translational Medicine Research Unit, Faculty of Medicine, University of Oulu, Oulu,
12 Finland; Medical Research Center Oulu, Oulu University Hospital, University of Oulu, Oulu,
13 Finland; Department of Oral and Maxillofacial Diseases, University of Helsinki, Helsinki, Finland;
14 HUSLAB, Department of Pathology, Helsinki University Central Hospital, University of Helsinki,
15 Helsinki, Finland; tuula.salo@helsinki.fi

16 ⁴Department of Clinical Sciences, Polytechnic University of Marche, Ancona, Italy;
17 d.sartini@staff.univpm.it

18 ⁵Department of Clinical Sciences, Polytechnic University of Marche, Ancona, Italy;
19 ales.salvucci@gmail.com

20 ⁶Department of Clinical and Experimental Medicine, University of Foggia, Via Rovelli 50, Foggia
21 71122, Italy; giuseppe.troiano@unifg.it

22 ⁷Department of Clinical and Experimental Medicine, University of Foggia, Via Rovelli 50, Foggia
23 71122, Italy; lorenzo.lomuzio@unifg.it

24 ⁸ Department of Clinical Sciences, Polytechnic University of Marche, Ancona, Italy;
25 New York-Marche Structural Biology center, Polytechnic University of Marche, Ancona, Italy;
26 m.emanuelli@univpm.it

1
2
3
4
5
6
7
8
9
10
11
12
13
14
15
16
17
18
19
20
21
22
23
24
25
26

Corresponding author:Khrystyna Zhurakivska, Clinica Odontoiatrica Universitaria, Via Rovelli, 50, Foggia 71122, Italy, Tel: +390881588080, Email: khrystyna.zhurakivska@gmail.com; khrystyna.zhurakivska@unifg.it

Running title: Fermented wheat germ extract and oral cancer.

Abstract

Oral carcinoma is one of the most aggressive cancers, and despite the advances in the therapy, its mortality is still high. An attention in cancer treatment has focused on natural compounds due to their potential beneficial effects on human health. In this study, the effects of dietary supplement Fermented Wheat Germ Extract (FWGE) on oral tongue squamous cell carcinoma (OTSCC) cells were investigated *in vitro* using three cell lines (HSC-3, SAS, SCC-25) with variable aggressiveness. The cell viability was significantly decreased by the treatment with high concentration of FWGE in every cell line. Regarding migration and invasion, HSC-3 and SCC-25 cells were most sensitive to FWGE since their movement was significantly reduced with 5 and 10 mg/ml FWGE, while SAS was inhibited only with 10 mg/ml FWGE. Chemotherapeutic compounds (cisplatin and 5-fluorouracil) significantly reduced all OTSCC cells viability. Importantly, combination of these drugs with 10 mg/ml FWGE significantly decreased the cell viability compared to the treatment with the chemotherapeutics or FWGE alone. Based on these *in vitro* experiments, the use of FWGE seems to improve the anticancer effects on OTSCC cells. Further *in vivo* and clinical studies should be conducted to verify the positive effects of FWGE for OTSCC patients.

Keywords: FWGE, Avemar, OTSCC, Oral cancer, nutraceuticals.

1 **Introduction**

2 Oral squamous cell carcinoma (OSCC) represents one of the most aggressive types of cancers with
3 over 350000 new cases and 146000 deaths in 2015 worldwide.(1, 2) The incidence of OSCC, and
4 especially oral tongue carcinoma (OTSCC), is increasing and the average age of the affected patients
5 is decreasing.(3) The etiologic factors for OSCC include tobacco, alcohol, betel quid or a combined
6 consumption of them. The prognosis associates with several features, but in general, early diagnosis
7 and surgical treatment of low stage tumors improve the outcome.(4-8) Radiotherapy, chemotherapy
8 and biological therapies are applied for patients with advanced or recurrent disease. However, despite
9 the advances in the cancer therapy, the 5-years survival rate does not globally exceed 60 % .(9, 10)

10 There are several challenges in current cancer treatment. Among these, the need of more
11 effective, personalized and selective therapies .(11) The toxicity of the current cancer drugs often
12 causes series of severe side effects, which significantly worsen patients' quality of life and often leads
13 to the interruption of the therapy.(12) Efforts have been made to find compounds able to support and
14 improve cancer therapy. A growing attention has been focused on some natural products known to
15 be beneficial for humans.

16 Fermented wheat germ extract (FWGE) is produced through the fermentation of wheat germ
17 by *Saccharomyces cerevisiae*, separation of the fermentation liquid, drying and granulation.(13)
18 Recent studies reported that two quinones, 2-methoxy benzoquinone and 2,6-dimethoxy
19 benzoquinone, which are present in wheat germ as glucosides, are likely responsible for some of the
20 biological properties of FWGE.(13-15) FWGE, also known as Avemar™, has been evaluated *in vitro*
21 and shown to have an inhibitory action on many cancer cell lines.(16) A couple of clinical studies
22 have been conducted to test the effects of FWGE supplement on patients undergoing conventional
23 chemotherapy for melanoma(17) and colorectal cancer(18). The results revealed significantly
24 improved survival in the groups supplemented with FWGE compared to the controls treated with the
25 conventional drugs only.^{17,18}

1 Although the anti-tumor activity of FWGE has been reported in some cancers, its action on
2 OTSCC has been investigated only with one oral tongue cell line (SCC-4) *in vitro*.(19) The purpose
3 of present study is to evaluate the effect of FWGE on three additional OTSCC cell lines with different
4 invasive properties.

5

6 **Materials and methods**

7 ***Cell lines***

8 The three human OTSCC cell lines HSC-3 (Japanese Collection of Research Bioresources (JCRB),
9 JCRB0623), SCC-25 (ATCC, CRL-1628) and SAS (JCRB Cell Bank, JCRB0260) were routinely
10 cultured in 1:1 Dulbecco's Modified Eagle Medium (DMEM):Ham's Nutrient Mixture F-12 (Gibco,
11 Carlsbad, CA, USA), supplemented with 10% heat-inactivated FBS (Gibco), 100 U/ml penicillin,
12 100 µg/ml streptomycin, 50 µg/ml ascorbic acid, 250 ng/ml amphotericin B and 0.4 ng/ml
13 hydrocortisone (all from Sigma Aldrich, St Louis, MO, USA). All cell lines were cultured at 37 °C
14 in a humidified atmosphere of 95% air and 5% CO₂ and passaged routinely using trypsin-EDTA
15 (Sigma- Aldrich).

16

17 ***Drugs and chemicals***

18 FWGE was donated by American BioScience Inc. under form of Fermented Wheat Germ Extract –
19 Super concentrate (FWGE-SC[®]), with the trademark of Metatrol[®]. The solution was prepared,
20 considering the proportion indicated by the manufacturer (41 mg of FWGE-SC[®]= 5500 mg of
21 FWGE). For each experiment, a fresh stock solution containing 100 mg/ml FWGE was prepared to
22 serum-free DMEM/F-12 media with 0.5% lactalbumin (Sigma-Aldrich), vortexed, centrifuged and
23 passed through a 0.22 µm filter.

24

25 ***Cell Viability Assay***

1 HSC-3 and SCC-25 cell lines were seeded into 96-well flat-bottom tissue plates with density of 5×10^3
2 cells per well and SAS cells with density of 2×10^3 cells. After 24 h of incubation at 37°C and 5%
3 CO₂, the cells were treated with different concentrations of FWGE (2, 5 and 10 mg/ml) and control
4 cells were treated with normal media mixed with lactalbumin medium (9:1). Cell growth was
5 determined by the MTT (3-(4,5-dimethylthiazol-2-yl)-2, 5-diphenyltetrazolium bromide) assay
6 (Sigma-Aldrich)(20) according to the manufacturer's protocol at 24, 48 and 72 h of incubation.
7 Absorbance was measured at the wavelength of 550 nm with Victor 3V multilabel reader (Perkin
8 Elmer). Each experiment was performed in triplicate and repeated three times.

9

10 ***3D tumor spheroid invasion assay***

11 Spheroids were generated for three cell lines (HSC-3, SAS, SCC-25) following the protocol described
12 by Naakka et al.(21) Briefly, the cells were seeded in a complete growth medium at a cell density of
13 1×10^3 cells/well into ultra-low attachment (ULA) 96-well round bottom plates (Corning) and
14 incubated at 37°C for 4 days. After visual confirmation, spheroids were embedded in 50 µl gel
15 containing 0.5 mg/ml Myogel(22), 0.5 mg/ml of Fibrinogen (Merck), 0.3 U/ml Thrombin (Sigma-
16 Aldrich) and 33.3 µg/ml of Aprotinin (Sigma-Aldrich). The plate was then transferred to the incubator
17 at 37°C for 30 min in order to allow gel to solidify. 100 µl of complete culture medium containing
18 different concentrations (2, 5 and 10 mg/ml) of FWGE were gently added on top of gel. Control wells
19 were added with normal medium combined with lactalbumin (9:1). Spheroids were imaged at 0 h
20 and, after 2, 3, 4, 7, 9 and 11 days of incubation, using a Nikon Eclipse TS100 inverted light
21 microscope, with 4x objective magnification, connected to a Canon PowerShot S50 camera. Fiji
22 software(23) was used to measure the area covered by spheroids. The change in spheroid area at each
23 time point compared with the area at 0 h was calculated. Each experiment was performed in triplicate
24 and repeated three times.

25

26 ***Transwell invasion assays***

1 Transwell migration and invasion assays were performed in 6.5 mm inserts with an 8 µm pore size
2 (Corning). For invasion assays, membranes were coated with 50 µl of MyoGel(22, 24) (2.4 mg/ml),
3 an extracellular matrix developed in laboratory of University of Oulu solidified with 0.8 mg/ml type
4 I collagen from rat tail (Corning) in serum free medium. The HSC-3 and SAS cells were seeded into
5 the upper chamber with a density of 70,000 cells, diluted in 100 µl medium containing 0.5% of
6 lactalbumin instead of FBS. Then, 100 µl of medium containing indicated amounts of FWGE
7 suspended in lactalbumin medium was added on top of the cells. As a chemoattractant, 500 µl of
8 medium supplemented with 10% FBS was used in the lower chamber.

9 The Transwell plates were incubated at 37°C for 48 h for migration assay and for 72 h for invasion
10 assay. Then, the cells were fixed in 4% neutral buffered formaldehyde for 1 h and washed once with
11 PBS. Cells were stained with 1% Toluidine Blue in 1% Borax for 10 min at room temperature and
12 washed several times with deionized water. Then, non-invaded cells on the upper surface of the filter
13 were carefully removed with a wet cotton swab. Toluidine blue stain was eluted with 1% SDS and
14 absorbance was measured at 650 nm using a Victor2 Microplate Reader (Perkin Elmer Wallac).(22)

15 All the experiments have been performed in triplicate and repeated from three to five times. The
16 average of the results is reported.

17

18 ***Treatment with chemotherapeutic drugs alone and in combination with FWGE***

19 Cisplatin (Cis) was dissolved in culture medium, while 0,1% DMSO was used to dissolve 5-
20 fluorouracil (5-FU). Stock solutions were then diluted in culture medium to final concentration of 0.5
21 µg/ml Cis or 5-FU. Combined chemotherapeutic treatment was carried out by mixing Cis and 5-FU
22 at 0.1µg/ml and 0.25 µg/ml final concentration, respectively. The concentration of chemotherapeutics
23 was chosen based on previous experiments testing a range of concentrations from 0,1 µg/mL to
24 20µg/mL, for both single drugs and combinations of them (data not shown). FWGE was used with
25 concentration of 5 and 10 mg/ml alone or in combination with Cis, 5-FU or both. For F-FU tests,
26 control cells were treated with 0.1% DMSO.

1 HSC-3 and SAS cells were seeded in 96-well plates, at a density of 2×10^3 cells/well. Cells
2 were allowed to attach overnight and then incubated with compounds, or with DMSO only, for 24,
3 48 and 72 hours, after which cell viability was evaluated by MTT assay as described above. All
4 experiments were performed in triplicate and repeated three times.

5

6 ***Statistical analysis***

7 Analysis of data were performed using IBM SPSS Statistics Version 25 (SPSS, Inc.) and GraphPad
8 Prism Version 6.01 (GraphPad Software, Inc.). Data distribution was evaluated using Kolmogorov-
9 Smirnov and Shapiro-Wilk tests. ANOVA and Kruskal-Wallis tests were applied for multiple
10 comparisons, while Dunn and Tukey tests were used for post-hoc analysis.

11

12 **RESULTS**

13 ***FWGE reduces OTSCC cell viability in dose-dependent manner***

14 To assess the effects of FWGE on cell viability of OTSCC cell lines, cells were treated with different
15 concentrations of the compound and analyzed by MTT assay was performed at time points 24, 48 and
16 72 h. The concentrations of FWGE were decided based on the previous studies.(3, 19, 25, 26) An
17 initial experiment of cell viability was carried out by testing three concentrations (0.1, 1 and 10
18 mg/ml). Since doses 0.1 and 1 mg/ml had no effect on OTSCC cell viability, two additional
19 concentrations (2 and 5 mg/mg) were explored. Based on the response data, the concentrations of 2,
20 5 and 10 mg/ml were chosen for further experiments. The highly invasive HSC-3, and less invasive
21 SCC-25 cells treated with 5 and 10 mg/ml FWGE showed a significant ($p < 0.001$) reduction in their
22 viability compared to untreated cells (Fig.1a and c, Supplementary Table 1). Concerning SAS, a
23 significant ($p < 0.01$) cytotoxicity was detected only upon treatment with the highest concentration (10
24 mg/ml) (Fig. 1b, Supplementary Table 1),

25

26 ***Cell movement is differentially affected by FWGE in OTSCC cell lines***

1 3D tumor spheroid invasion assay

2 The invasion of spheroids formed by the OTSCC cell lines was tested in human leiomyoma-based
3 extracellular matrix, Myogel.(21) The invasion area of spheroids was compared between untreated
4 cells, and cells treated with 2, 5 and 10 mg/ml of FWGE at different time points. On day 2 and 4
5 HSC-3 cells treated with 5 and 10 mg/ml FWGE invaded significantly less than controls (Fig. 2a and
6 3a). On day 7, only 10 mg/ml FWGE was significantly effective (Fig. 2a and 3a, Supplementary
7 Table 2). SCC-25 cells, treated with 5 and 10 mg/ml FWGE invaded significantly less on days 7, 9
8 and 11 (Fig.2b and 3b, Supplementary Table 2), whereas with SAS cells, only the highest
9 concentration of FWGE (10 mg/ml) had a significant reduction on spheroid invasion on days 2, 3 and
10 4 (Fig.2c and 3c, Supplementary Table 2).

11

12 Transwell migration and invasion assay

13 Transwell assay was used to evaluate whether treatment with FWGE could affect OTSCC cells
14 vertical migration through a semipermeable membrane and invasion through Myogel. Here we
15 compared only two cell lines, HSC-3, and SAS, to see if those differences seen in viability and
16 spheroid assay are seen also in vertical migration and invasion.

17 HSC-3 cells treated with 5 and 10 mg/ml FWGE significantly ($p<0.01$) reduced their
18 migration and invasion(Fig. 4a), but in case of SAS cells, only the highest concentration of FWGE
19 (10 mg/ml) significantly ($p<0.01$) inhibited their migration and invasion through Transwell (Fig. 4b,
20 Supplementary Table 3).

21

22 ***Combination of chemotherapeutic drugs with FWGE significantly enhanced the anti-cancer***
23 ***effects***

24 To first test the effect of DMSO on cell viability, HSC-3 and SAS cells were grown in culture medium
25 containing DMSO concentrations ranging from 0.05 to 1.25% and cell viability was tested with MTT
26 assay. DMSO concentration 0.1% showed no significant effect on cell viability ($p>0.05$) when

1 compared with normal culture medium (data not shown), thereby this concentration was used as a
2 solvent for 5-fluorouracil in further experiments.

3 The comparison between chemotherapeutic drugs revealed that the treatment with Cisplatin
4 (0.5 µg/mL) inhibited HSC-3 cell viability more than 5-fluorouracil (0.5µg/mL) alone, or by combined
5 drugs (cis 0.1 µg/ml + 5-FU 0.25 µg/mL) (p<0.05). When cisplatin, 5-fluorouracil or both were used
6 in combination with FWGE at high concentration (10 mg/ml), cell viability of HSC-3 and SAS cells
7 was further reduced compared to cells treated only with chemotherapeutic drugs (Fig. 5a and b,
8 Supplementary Table 4).

9

10 **Discussion**

11 Several natural compounds have been analyzed to explore their potential anti-cancer properties for
12 disease prevention (27) or importantly, also to improve the current cancer treatment and reduce the
13 side-effects of common anti-cancer therapies .(28, 29) The extract of wheat germ fermented by
14 *Saccharomyces cerevisiae* contains a high amount of benzoquinone that exerts an antiproliferative
15 and cytotoxic activity against several tumor cells.(3, 16) In this study, the effects of FWGE on highly
16 aggressive and metastatic HSC-3, invasive SAS, as well as on less invasive SCC-25 OTSCC cell
17 lines(30-34) were investigated to see if FWGE affects their viability, migration and invasion. Finally,
18 the combination of FWGE with commonly used chemotherapeutic drugs, cisplatin and 5-fluorouracil,
19 on cancer cell viability was analyzed.

20 Based on the viability assay, all three OTSCC cell lines revealed to be sensitive, albeit to varying
21 degrees, to the treatment with FWGE. Although the concentrations 5 and 10 mg/ml FWGE reduced
22 significantly cell viability in HSC-3 and SCC-25 cells, surprisingly, in case of SAS, no effect was
23 seen with 5 mg/ml, but the highest concentration (10 mg/ml) reduced also their viability. Yang et al.
24 have evaluated the action of Avemar[®] on OTSCC (SCC-4) cell line. They had similar results, even
25 though the inhibitory effect was reached with lower concentration of FWGE (0.1-1.6 mg/ml).(19)
26 Such result may be due to the different product used in the experiment, but also be related to the

1 different reactivity of OTSCC cell lines to this compound. This is supported by our results with three
2 OTSCC cell lines with different aggressiveness.

3 Spheroid assay was also conducted with all three cell lines, and here the invasive capacity of all the
4 cell lines was inhibited by the highest concentration (10 mg/ml) of FWGE, and no effect was observed
5 using the lowest concentration (2 mg/ml). Again, in SAS the concentration of 5 mg/ml did not
6 produce any significant effect, but the invasive capacity of SCC-25 was strongly inhibited by this
7 concentration. In addition, HSC-3 were sensitive to the 5 mg/ml treatment for the first 4 days, but no
8 longer on day 7. In case of Transwell vertical migration, the same difference between the two cell
9 lines was present: HSC-3 cells with the concentrations of 5 and 10 mg/ml FWGE migrated
10 significantly less than controls, whereas with SAS cells only 10 mg/ml FWGE significantly inhibited
11 invasion. For the Transwell invasion, we used the Myogel(22, 24) matrix as in the spheroid invasion
12 assay, since we have demonstrated that Myogel contains human tumor derived compounds, such as
13 MMP-2, tenascin-C and collagen types XII and XIV, unlike mouse tumor derived commercial matrix,
14 Matrigel®. Furthermore, myoma tissue shows similar characteristics with the metastatic niche(35),
15 and it has shown to be suitable also for preclinical drug testing.(36) Also in Myogel invasion, FWGE
16 treated HSC-3 and SAS cells behaved similar as in spheroid and migration assays. This confirms the
17 different aggressiveness of these cells, observed already in previous studies (37, 38), and
18 demonstrates that oral tongue carcinoma cells display variable phenotypes and respond differently on
19 drugs and natural compounds, like FWGE. Our results are in line with some previously reported data,
20 showing that Avemar® inhibits OTSCC cell migration and invasion. (19)

21 Cisplatin and 5-fluorouracil are chemotherapeutics used for the treatment of advanced oral
22 cancer.(39, 40) Despite their wide use, the problem is that their therapeutic action is accompanied by
23 multiple side effects and cancers frequently show resistance to the treatment.(41, 42) Moreover,
24 additional compounds have been proposed to enhance chemosensitivity of OSCC towards cisplatin
25 and 5-fluorouracil.(43, 44) Our results demonstrated that FWGE is able to enhance the anti-tumor
26 effects of these chemotherapeutics in OTSCC cells. Indeed, combined treatment with

1 chemotherapeutics and FWGE at high concentration (10 mg/ml) exerted significantly higher
2 inhibitory effects on cancer cell viability, compared to treatment with chemotherapy or FWGE alone.
3 However, the combinations of chemotherapy drugs with low concentration FWGE (5 mg/ml) had no
4 effect compared with the chemotherapy alone or even slightly promoted cell viability, although not
5 significantly. A similar effect has been noticed by Mueller et al.(3) in the treatment of human colon
6 cancer cell lines HT29 and HCT-8: if the FWGE preceded 5-FU treatment, an antagonism trend
7 between compounds was observed. Regarding the other combinations with higher FWGE
8 concentrations, a synergistic effect was observed in terms of cell viability inhibition, similarly to
9 results reported in other studies. (3)

10 Taken together, albeit with different efficacy depending on the OTSCC cell line, FWGE showed anti-
11 cancer effects and, especially in high concentrations, its association with chemotherapeutics
12 strengthens their inhibitory power. Further studies, including *in vivo* experiments, are necessary to
13 identify the optimal combinations of chemotherapy with natural compounds to provide optimal drug
14 efficacy with lower toxicity on the patients.

15

16

17

18 **Acknowledgements**

19 We gratefully acknowledge Maija-Leena Lehtonen and Eeva-Maija Kiljander for expert technical
20 assistance.

21

22 **Disclosure of interest**

23 The authors report no conflict of interest.

24 **All authors declare that there** are no competing interests, and no financial or personal relationships
25 with other people or organizations that could inappropriately influence this work.

26

1 **Funding**

2 The study was funded by authors' institutions.

3

4 **Authors' contributions**

5 KZ, MR, DS conceived and designed the experiments, performed the experiments, analyzed the data
6 and wrote the paper. TS, LLM, ME conceived and designed the experiments, contributed reagents
7 and wrote the paper. AS, GT performed the experiments, analyzed data. All authors read and
8 approved the manuscript and agree to be accountable for all aspects of the research in ensuring that
9 the accuracy or integrity of any part of the work are appropriately investigated and resolved.

10

1
2
3
4
5
6
7
8
9
10
11
12
13
14
15
16
17
18
19
20
21
22
23
24
25
26
27
28
29
30
31
32
33
34
35
36
37
38
39
40
41
42
43
44
45
46
47
48
49
50

REFERENCES

- 1 Disease GBD, Injury I, Prevalence C: Global, regional, and national incidence, prevalence, and years lived with disability for 310 diseases and injuries, 1990-2015: a systematic analysis for the Global Burden of Disease Study 2015. *Lancet* **388**, 1545-1602, 2016. doi: 10.1016/S0140-6736(16)31678-6
- 2 Bray F, Ferlay J, Soerjomataram I, Siegel RL, Torre LA, et al.: Global cancer statistics 2018: GLOBOCAN estimates of incidence and mortality worldwide for 36 cancers in 185 countries. *CA Cancer J Clin* **68**, 394-424, 2018. doi: 10.3322/caac.21492
- 3 Mueller T, Jordan K, Voigt W: Promising cytotoxic activity profile of fermented wheat germ extract (Avemar(R)) in human cancer cell lines. *J Exp Clin Cancer Res* **30**, 42, 2011. doi: 10.1186/1756-9966-30-42
- 4 Taghavi N, Yazdi I: Prognostic factors of survival rate in oral squamous cell carcinoma: clinical, histologic, genetic and molecular concepts. *Arch Iran Med* **18**, 314-9, 2015. doi: 0151805/AIM.0010
- 5 Troiano G, Caponio VCA, Adipietro I, Tepedino M, Santoro R, et al.: Prognostic significance of CD68(+) and CD163(+) tumor associated macrophages in head and neck squamous cell carcinoma: A systematic review and meta-analysis. *Oral Oncol* **93**, 66-75, 2019. doi: 10.1016/j.oraloncology.2019.04.019
- 6 Caponio VCA, Troiano G, Adipietro I, Zhurakivska K, Arena C, et al.: Computational analysis of TP53 mutational landscape unveils key prognostic signatures and distinct pathobiological pathways in head and neck squamous cell cancer. *Br J Cancer*, 2020. doi: 10.1038/s41416-020-0984-6
- 7 Troiano G, Caponio VCA, Zhurakivska K, Arena C, Pannone G, et al.: High PD-L1 expression in the tumour cells did not correlate with poor prognosis of patients suffering for oral squamous cells carcinoma: A meta-analysis of the literature. *Cell Prolif* **52**, e12537, 2019. doi: 10.1111/cpr.12537
- 8 Almangush A, Heikkinen I, Bakhti N, Makinen LK, Kauppila JH, et al.: Prognostic impact of tumour-stroma ratio in early-stage oral tongue cancers. *Histopathology* **72**, 1128-1135, 2018. doi: 10.1111/his.13481
- 9 Rogers SN, Brown JS, Woolgar JA, Lowe D, Magennis P, et al.: Survival following primary surgery for oral cancer. *Oral Oncol* **45**, 201-11, 2009. doi: 10.1016/j.oraloncology.2008.05.008
- 10 Mroueh R, Haapaniemi A, Grénman R, Laranne J, Pukkila M, et al.: Improved outcomes with oral tongue squamous cell carcinoma in Finland. *Head Neck* **39**, 1306-1312, 2017. doi: 10.1002/hed.24744
- 11 Lindemann A, Takahashi H, Patel AA, Osman AA, Myers JN: Targeting the DNA Damage Response in OSCC with TP53 Mutations. *J Dent Res* **97**, 635-644, 2018. doi: 10.1177/0022034518759068
- 12 Shapiro CL: Highlights of Recent Findings on Quality-of-Life Management for Patients With Cancer and Their Survivors. *JAMA Oncol* **2**, 1401-1402, 2016. doi: 10.1001/jamaoncol.2016.3620
- 13 Hidvegi M, Raso E, Tomoskozi-Farkas R, Szende B, Paku S, et al.: MSC, a new benzoquinone-containing natural product with antimetastatic effect. *Cancer Biother Radiopharm* **14**, 277-89, 1999. doi: 10.1089/cbr.1999.14.277
- 14 Hidvegi M, Raso E, Tomoskozi-Farkas R, Paku S, Lapis K, et al.: Effect of Avemar and Avemar + vitamin C on tumor growth and metastasis in experimental animals. *Anticancer Res* **18**, 2353-8, 1998
- 15 Telekes A, Hegedus M, Chae CH, Vekey K: Avemar (wheat germ extract) in cancer prevention and treatment. *Nutr Cancer* **61**, 891-9, 2009. doi: 10.1080/01635580903285114
- 16 Zhurakivska K, Troiano G, Caponio VCA, Dioguardi M, Arena C, et al.: The Effects of Adjuvant Fermented Wheat Germ Extract on Cancer Cell Lines: A Systematic Review. *Nutrients* **10**, 2018. doi: 10.3390/nu10101546
- 17 Demidov LV, Manziuk LV, Kharkevitch GY, Pirogova NA, Artamonova EV: Adjuvant fermented wheat germ extract (Avemar) nutraceutical improves survival of high-risk skin melanoma patients: a randomized, pilot, phase II clinical study with a 7-year follow-up. *Cancer Biother Radiopharm* **23**, 477-82, 2008. doi: 10.1089/cbr.2008.0486
- 18 Jakab F, Shoenfeld Y, Balogh A, Nichelatti M, Hoffmann A, et al.: A medical nutriment has supportive value in the treatment of colorectal cancer. *Br J Cancer* **89**, 465-9, 2003. doi: 10.1038/sj.bjc.6601153

1 19 Yang MD, Chang WS, Tsai CW, Wang MF, Chan YC, et al.: Inhibitory Effects of AVEMAR on
2 Proliferation and Metastasis of Oral Cancer Cells. *Nutr Cancer* **68**, 473-80, 2016. doi:
3 10.1080/01635581.2016.1153668
4 20 Kumar P, Nagarajan A, Uchil PD: Analysis of Cell Viability by the MTT Assay. *Cold Spring Harb Protoc*
5 **2018**, 2018. doi: 10.1101/pdb.prot095505
6 21 Naakka E, Tuomainen K, Wistrand H, Palkama M, Suleymanova I, et al.: Fully human tumor-based
7 matrix in three-dimensional spheroid invasion assay. *JoVE (Journal of Visualized Experiments)*, e59567,
8 2019
9 22 Salo T, Sutinen M, Apu EH, Sundquist E, Cervigne NK, et al.: A novel human leiomyoma tissue
10 derived matrix for cell culture studies. *BMC cancer* **15**, 981, 2015
11 23 Schindelin J, Arganda-Carreras I, Frise E, Kaynig V, Longair M, et al.: Fiji: an open-source platform for
12 biological-image analysis. *Nat Methods* **9**, 676-82, 2012. doi: 10.1038/nmeth.2019
13 24 Salo T, Dourado MR, Sundquist E, Apu EH, Alahuhta I, et al.: Organotypic three-dimensional assays
14 based on human leiomyoma-derived matrices. *Philosophical Transactions of the Royal Society B: Biological*
15 *Sciences* **373**, 20160482, 2017
16 25 Zhang JY, Xiao X, Dong Y, Wu J, Yao F, et al.: Effect of fermented wheat germ extract with
17 *Lactobacillus plantarum* dy-1 on HT-29 cell proliferation and apoptosis. *J Agric Food Chem* **63**, 2449-57,
18 2015. doi: 10.1021/acs.jafc.5b00041
19 26 Tai CJ, Wang WC, Wang CK, Wu CH, Yang MD, et al.: Fermented wheat germ extract induced cell
20 death and enhanced cytotoxicity of Cisplatin and 5-Fluorouracil on human hepatocellular carcinoma cells.
21 *Evid Based Complement Alternat Med* **2013**, 121725, 2013. doi: 10.1155/2013/121725
22 27 Xie M, Liu J, Tsao R, Wang Z, Sun B, et al.: Whole Grain Consumption for the Prevention and
23 Treatment of Breast Cancer. *Nutrients* **11**, 2019. doi: 10.3390/nu11081769
24 28 Vernieri C, Nichetti F, Raimondi A, Pusceddu S, Platania M, et al.: Diet and supplements in cancer
25 prevention and treatment: Clinical evidences and future perspectives. *Crit Rev Oncol Hematol* **123**, 57-73,
26 2018. doi: 10.1016/j.critrevonc.2018.01.002
27 29 Aquino IG, Bastos DC, Cuadra-Zelaya FJM, Teixeira IF, Salo T, et al.: Anticancer properties of the
28 fatty acid synthase inhibitor TVB-3166 on oral squamous cell carcinoma cell lines. *Arch Oral Biol* **113**,
29 104707, 2020. doi: 10.1016/j.archoralbio.2020.104707
30 30 Momose F, Araida T, Negishi A, Ichijo H, Shioda S, et al.: Variant sublines with different metastatic
31 potentials selected in nude mice from human oral squamous cell carcinomas. *J Oral Pathol Med* **18**, 391-5,
32 1989. doi: 10.1111/j.1600-0714.1989.tb01570.x
33 31 Matsumoto K, Matsumoto K, Nakamura T, Kramer RH: Hepatocyte growth factor/scatter factor
34 induces tyrosine phosphorylation of focal adhesion kinase (p125FAK) and promotes migration and invasion
35 by oral squamous cell carcinoma cells. *J Biol Chem* **269**, 31807-13, 1994
36 32 Ramos DM, Chen BL, Boylen K, Stern M, Kramer RH, et al.: Stromal fibroblasts influence oral
37 squamous-cell carcinoma cell interactions with tenascin-C. *Int J Cancer* **72**, 369-76, 1997. doi:
38 10.1002/(sici)1097-0215(19970717)72:2<369::aid-ijc28>3.0.co;2-9
39 33 Okumura K, Konishi A, Tanaka M, Kanazawa M, Kogawa K, et al.: Establishment of high- and low-
40 invasion clones derived for a human tongue squamous-cell carcinoma cell line SAS. *J Cancer Res Clin Oncol*
41 **122**, 243-8, 1996. doi: 10.1007/bf01209653
42 34 Takahashi K: Establishment and characterization of a cell line (SAS) from poorly defferentiated
43 human squamous cell carcinoma of the tongue. *J Jpn Stomatol Soc* **38**, 20-28, 1989
44 35 Teppo S, Sundquist E, Vered M, Holappa H, Parkkisenniemi J, et al.: The hypoxic tumor
45 microenvironment regulates invasion of aggressive oral carcinoma cells. *Exp Cell Res* **319**, 376-89, 2013. doi:
46 10.1016/j.yexcr.2012.12.010
47 36 Tuomainen K, Al-Samadi A, Potdar S, Turunen L, Turunen M, et al.: Human Tumor-Derived Matrix
48 Improves the Predictability of Head and Neck Cancer Drug Testing. *Cancers (Basel)* **12**, 2019. doi:
49 10.3390/cancers12010092
50 37 Väyrynen O, Piippo M, Jämsä H, Väisänen T, de Almeida CEB, et al.: Effects of ionizing radiation and
51 HPSE1 inhibition on the invasion of oral tongue carcinoma cells on human extracellular matrices in vitro.
52 *Exp Cell Res* **371**, 151-161, 2018. doi: 10.1016/j.yexcr.2018.08.005

1 38 Vierthaler M, Rodrigues PC, Sundquist E, Siponen M, Salo T, et al.: Fluctuating role of antimicrobial
2 peptide hCAP18/LL-37 in oral tongue dysplasia and carcinoma. *Oncol Rep* **44**, 325-338, 2020. doi:
3 10.3892/or.2020.7609

4 39 Dasari S, Tchounwou PB: Cisplatin in cancer therapy: molecular mechanisms of action. *Eur J*
5 *Pharmacol* **740**, 364-78, 2014. doi: 10.1016/j.ejphar.2014.07.025

6 40 Andreadis C, Vahtsevanos K, Sidiras T, Thomaidis I, Antoniadis K, et al.: 5-Fluorouracil and cisplatin
7 in the treatment of advanced oral cancer. *Oral Oncol* **39**, 380-5, 2003. doi: 10.1016/s1368-8375(02)00141-0

8 41 Su L, Wang Y, Xiao M, Lin Y, Yu L: Up-regulation of survivin in oral squamous cell carcinoma
9 correlates with poor prognosis and chemoresistance. *Oral Surg Oral Med Oral Pathol Oral Radiol Endod*
10 **110**, 484-91, 2010. doi: 10.1016/j.tripleo.2010.04.009

11 42 Shim HJ, Kim HJ, Hwang JE, Bae WK, Chung IJ, et al.: Long term complications and prognostic factors
12 in locally advanced nasopharyngeal carcinoma treated with docetaxel, cisplatin, 5-fluorouracil induction
13 chemotherapy followed by concurrent chemoradiotherapy: A retrospective cohort study. *Medicine*
14 *(Baltimore)* **99**, e23173, 2020. doi: 10.1097/md.00000000000023173

15 43 Pons-Fuster López E, Gómez García F, López Jornet P: Combination of 5-Fluorouracil and polyphenol
16 EGCG exerts suppressive effects on oral cancer cells exposed to radiation. *Arch Oral Biol* **101**, 8-12, 2019.
17 doi: 10.1016/j.archoralbio.2019.02.018

18 44 Kim EH, Jang H, Shin D, Baek SH, Roh JL: Targeting Nrf2 with wogonin overcomes cisplatin
19 resistance in head and neck cancer. *Apoptosis* **21**, 1265-1278, 2016. doi: 10.1007/s10495-016-1284-8

20

21

1 **FIGURE LEGEND**

2

3 **Figure 1.** Effect of FWGE treatment (2, 5 and 10 mg/ml) on HSC-3 (a), SAS (b), SCC-25 (c) cell
4 viability assessed by MTT assay at 24, 48 and 72 hours. The optical density (OD) was measured at
5 570 nm. Columns and bars represent mean and standard deviation (SD). * $p < 0.05$, ** $p < 0.01$, ***
6 $p < 0.001$ compared with control.

7

8 **Figure 2.** Control and 10 mg/ml FWGE treated spheroids of HSC-3 (a), SAS (b) and SCC-25 (c)
9 cells imaged at 0 h and after indicated days, using a Nikon Eclipse TS100 inverted light microscope,
10 with 4x objective magnification, connected to a Canon PowerShot S50 camera.

11

12 **Figure 3.** Spheroid invasion assay of HSC-3 (a), SAS (b) and SCC-25 (c) cells. The columns
13 represent the difference in the spheroid area between a specific timepoint (day 2, 3, 4, 7, 9 or 11) and
14 the beginning of the analysis (day 0). Columns and bars represent mean and standard deviation (SD).
15 * $p < 0.05$, ** $p < 0.01$, *** $p < 0.001$ compared with control.

16

17 **Figure 4.** Transwell migration and invasion of 2, 5 and 10 mg/ml FWGE treated of HSC-3 (a) and
18 SAS (b) cells. The migrated (48 h) /invaded (72 h) cells were stained with Toluidine Blue, the stain
19 was dissolved in 1% SDS solution and the absorbance at 650 nm was measured. Columns and bars
20 represent mean and standard deviation (SD). * $p < 0.05$, ** $p < 0.01$, *** $p < 0.001$ compared with
21 control.

22

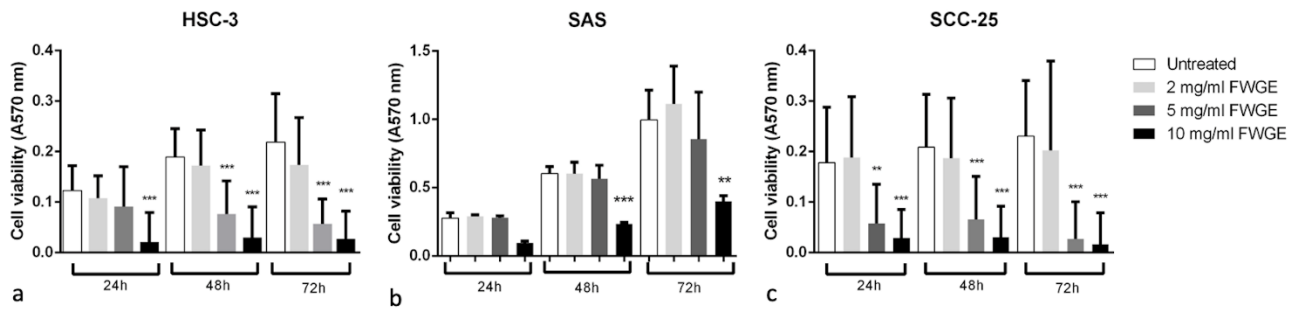
23 **Figure 5.** Effect of chemotherapeutic drugs and FWGE, used alone or in combination, on HSC-3 (a)
24 and SAS (b) cell viability assessed by MTT assay at 72 hours after treatment. The optical density
25 (OD) was measured at 570 nm. Columns and bars represent mean and standard deviation (SD). *

1 $p < 0.05$, ** $p < 0.01$, *** $p < 0.001$ compared with . Cis: Cisplatin; 5-Fu: 5-Fluorouracil; FWGE:

2 Fermented Wheat Germ Extract.

3

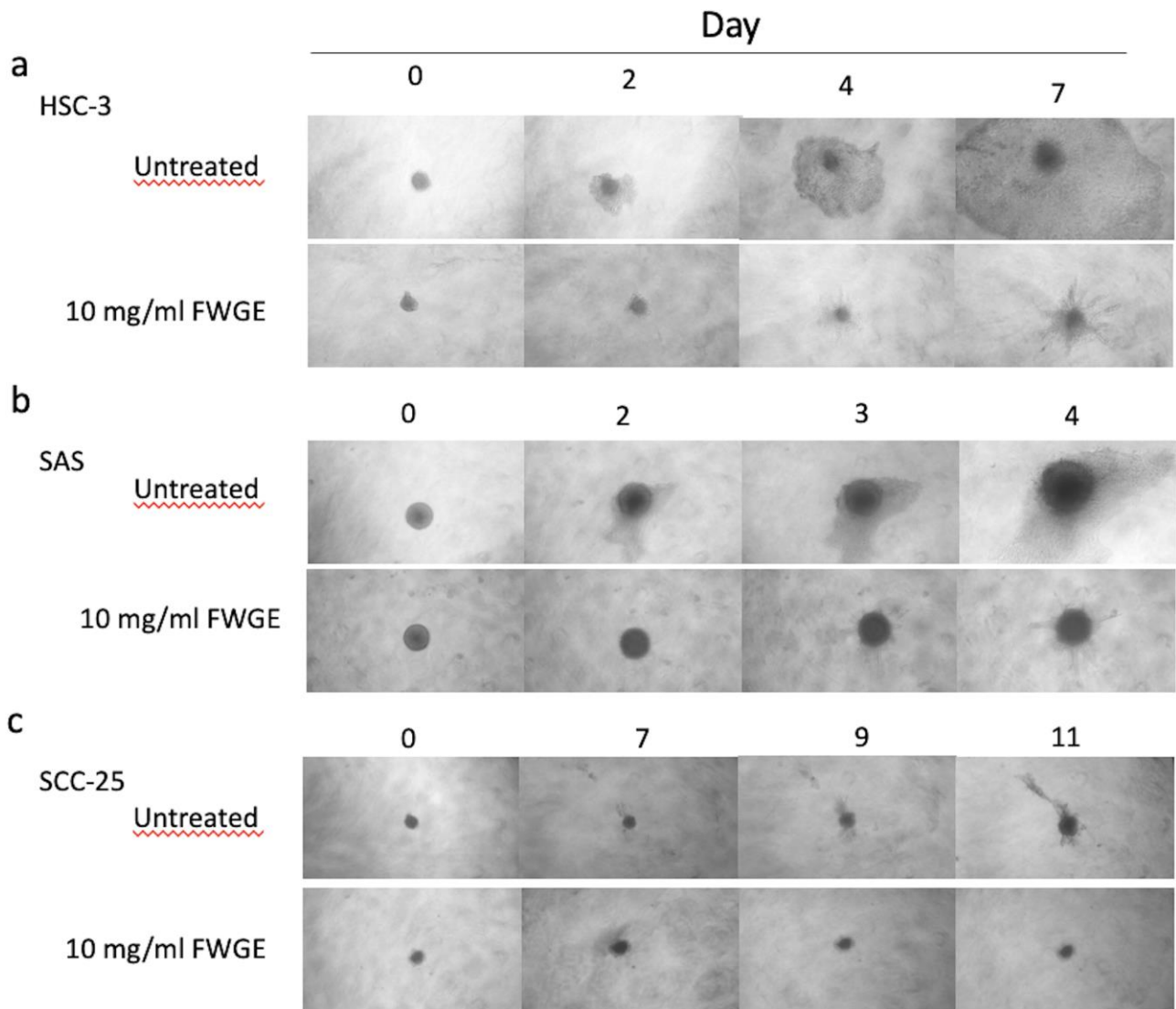
1 **Fig 1**



2

3

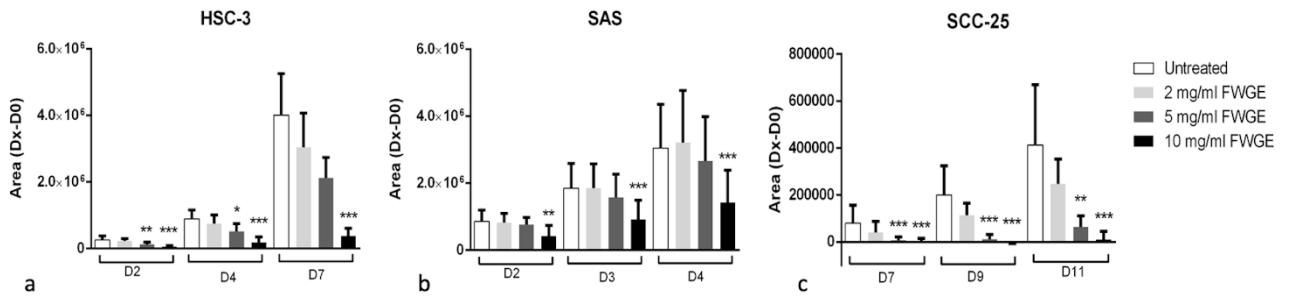
1 Fig. 2



2

3

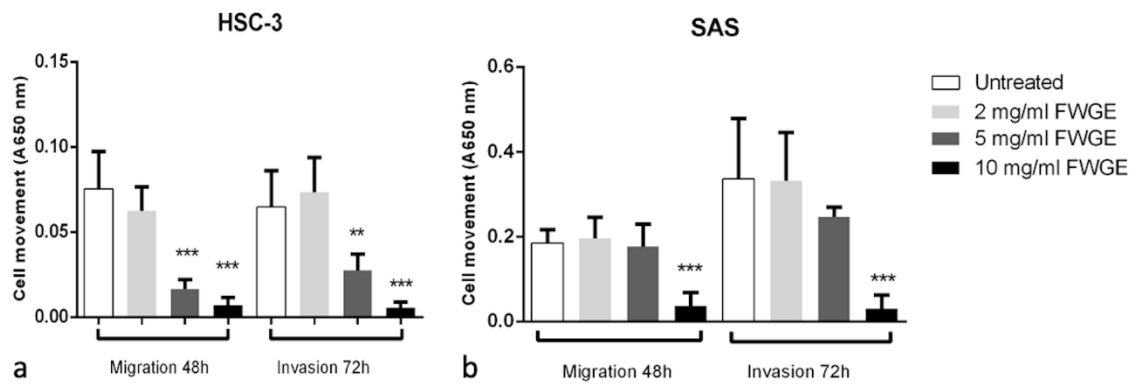
1 Fig. 3



2

3

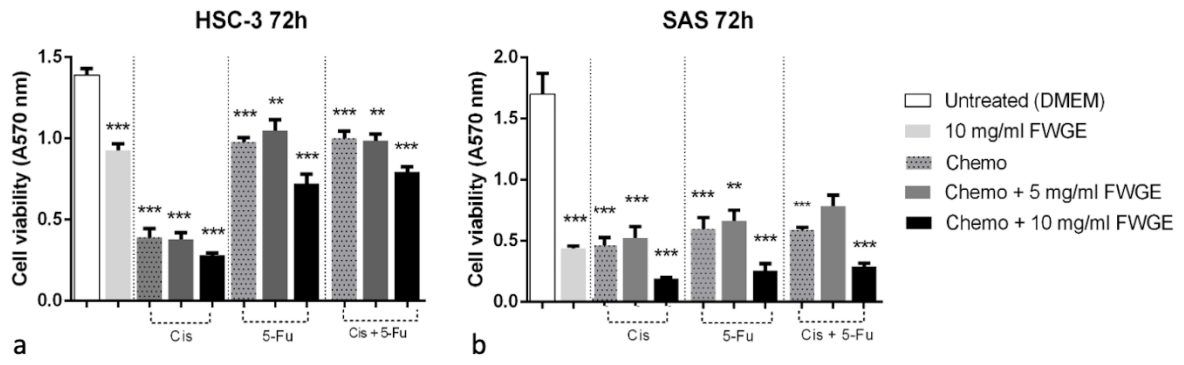
1 Fig. 4



2

3

1 Fig. 5



2

3

1 Supplementary material

2 Table 1: Effect of FWGE treatment on OTSCC cell viability assessed by MTT assay.

	HSC-3			SAS			SCC-25		
	<i>24h</i>	<i>48h</i>	<i>72h</i>	<i>24h</i>	<i>48h</i>	<i>72h</i>	<i>24h</i>	<i>48h</i>	<i>72h</i>
Untreated vs 2mg/ml	.8385	.8534	> .9999	>.9999	>.9999	>.9999	>.9999	> .9999	> .9999
Untreated vs 5mg/ml	.3722	***	***	>.9999	>.9999	>.9999	**	***	***
Untreated vs 10mg/ml	***	***	***	>.9999	***	**	***	***	***
2mg/ml vs 5mg/ml	.7960	***	*	>.9999	>.9999	>.9999	**	*	**
2mg/ml vs 10mg/ml	***	***	***	>.9999	***	*	***	***	***
5mg/ml vs 10mg/ml	**	.1305	> .9999	>.9999	**	0.4503	> .9999	> .9999	> .9999

3 p-values of Dunn’s multiple comparisons test; significant results in bold.

4 * p< 0.05; ** p< 0.01; ***p< 0.001.

5

	HSC-3			SAS			SCC-25		
	<i>D2</i>	<i>D4</i>	<i>D7</i>	<i>D2</i>	<i>D3</i>	<i>D4</i>	<i>D7</i>	<i>D9</i>	<i>D11</i>
Untreated vs 2mg/ml	>.9999	>.9999	>.9999	>.9999	>.9999	>.9999	.3066	>.9999	>.9999
Untreated vs 5mg/ml	**	*	.1652	>.9999	>.9999	>.9999	***	***	**
Untreated vs 10mg/ml	***	***	***	**	***	***	***	***	***
2mg/ml vs 5mg/ml	.0554	.2445	>.9999	>.9999	>.9999	>.9999	.3066	*	*
2mg/ml vs 10mg/ml	***	***	*	**	***	***	.1821	***	***
5mg/ml vs 10mg/ml	.0780	*	.4351	*	*	*	>.9999	>.9999	.8937

6 Table 2: Effect of FWGE treatment on OTSCC cell spheroids.

7 p-values of Dunn’s multiple comparisons test.

8 The results indicate the differences among groups in term of invasion area at different timepoints
9 (D=day).

10 * p< 0.05; ** p< 0.01; ***p< 0.001.

11

12 Table 3: Effect of FWGE treatments on OTSCC cell line Transwell migration and invasion

	HSC-3		SAS	
	<i>Migration 48h</i>	<i>Invasion 72h</i>	<i>Migration 48h</i>	<i>Invasion 72h</i>
Untreated vs 2mg/ml	0,8273	>.9999	>.9999	>.9999
Untreated vs 5mg/ml	***	**	>.9999	>.9999

Untreated vs 10mg/ml	***	***	***	***
2mg/ml vs 5mg/ml	**	**	>.9999	>.9999
2mg/ml vs 10mg/ml	***	***	***	***
5mg/ml vs 10mg/ml	0,5395	.1614	***	***

1 p-values of Dunn's multiple comparisons test;

2 The results indicate the differences between treatments with various concentrations of FWGE at
3 different timepoints (48-72 hours); significant results in bold. * p< 0.05; ** p< 0.01; ***p< 0.001;

4

5 Table 4: : Effect of chemotherapeutic drugs and FWGE, used alone or in combination, on HSC-3
6 and SAS cell viability assessed by MTT assay after 72 hours

	HSC-3			SAS		
	24h	48h	72h	24h	48h	72h
Untreated vs Cis	>.999	***	***	>.999	***	***
Untreated vs Cis+5mg/mL FWGE	>.999	***	***	>.999	***	***
Untreated vs Cis+10mg/mL FWGE	***	***	***	***	***	***
Untreated vs 5-FU	>.999	>.999	***	0.4907	*	***
Untreated vs 5-FU+5mg/mL FWGE	>.999	>.999	**	0.3760	**	**
Untreated vs 5-FU + 10mg/ml FWGE	***	>.999	***	***	***	***
Untreated vs Cis + 5-FU	>.999	***	***	0.5593	**	***
Untreated vs Cis + 5-FU + 5mg/mL	*	**	**	>.999	>.999	0.113
Untreated vs Cis+ 5-FU + 10mg/mL FWGE	***	.5067	***	***	***	***

7

8 Cis: Cisplatin; 5-Fu: 5-Fluorouracil; FWGE: Fermented Wheat Germ Extract

9 p-values of Dunn's multiple comparisons test; significant results in bold. * p< 0.05; ** p< 0.01;
10 ***p< 0.001.

11

12

13