



Research on hospital-based shared governance: a scoping review

Journal:	<i>International Journal of Health Governance</i>
Manuscript ID	ijhg-04-2020-0032
Manuscript Type:	Clinical Governance Reviews
Keywords:	Nursing < Health Professions, Clinical governance < Health Service Quality Assurance, Continuous quality improvement < Health Service Quality Assurance, Evidence-based practice < Health Service Quality Assurance, Governance structures < Health Service Quality Assurance, Health Professions

Research on hospital-based shared governance: a scoping review

Purpose

To review research on hospital-based shared governance, focusing on its core elements.

Design

A scoping review was conducted by searching the Medline (Ovid), CINAHL (EBSCO), Medic, ABI/INFORM Collection (ProQuest), and SveMed+ databases using SG and related concepts in hospital settings as search terms (May 1998–February 2019). Only original research articles examining SG were included. The reference lists of the selected articles were reviewed. Data were extracted from the selected articles by charting and then subjected to thematic analysis.

Findings

The review included 13 original research articles that examined SG in hospital settings. The studied organizations had implemented SG in different ways, and many struggled to obtain satisfactory results. SG was executed within individual professions or multiple professions and was typically implemented at both unit- and organization-levels. Thematic analysis revealed six core elements of SG: professionalism, shared decision-making, evidence-based practice (EBP), continuous quality improvement (CQI), collaboration, and empowerment.

Practical implications

An SG framework for hospital settings was developed based on the core elements of SG, the participants, and the organizational levels involved. Hospitals considering SG should prepare for a time-consuming process that requires belief in the core elements of SG. The SG framework can be used as a tool to implement and strengthen SG in organizations.

Originality

The review resumes the tradition of systematically reviewing SG literature, which had not been done in the 21st century. General tendencies of the research scene and research gaps are pointed out.

Key words

Hospitals, Scoping review, Shared Governance, Nursing

1 BACKGROUND

Shared governance (SG) is a structural phenomenon (Porter-O'Grady, 2001) that supports nurses' professional autonomy, control of their practice environment, and communication (Church *et al.*, 2008). It originated in the USA in the late 1970s, when a nation-wide nursing shortage prompted healthcare organizations to reassess nurses' priorities (Porter-O'Grady, 2012). An organizational culture with an empowering approach to clinical and organizational decision making was considered central (Di Fiore *et al.*, 2018) because the framework emerging from this reassessment aspired to change the structural reality in which nurses worked within formal, bureaucratic, and hierarchical organizations (Hess, 2004).

SG contributed to the creation of The Magnet Recognition Program®, which aims to give hospitals tools to attract and retain qualified nurses. The program was initially available to American hospitals but was expanded internationally in 2000 (Morgan *et al.*, 2006). A key objective in magnet hospitals is to achieve structural empowerment, for which SG provides a framework (Clavule *et al.*, 2016).

In an SG organization, clinical practice decisions should be made by those who provide the care. The idea is that nurses own their practice environment and have a voice in decision-making (Winslow *et al.*, 2015). Nurse managers have an important role as supporters of nurses in SG activities. The resulting partnership supports reciprocal communication, which is essential to the functioning of SG (Ott & Ross, 2014).

Positive outcomes in nursing practice are achieved when nurses learn how to self-direct their work while aligning it with unit-level teams and nursing leadership (Joseph & Bogue, 2016). Professional autonomy and decision-making skills can be enhanced by incorporating EBP into the SG framework and by enhancing staff nurses' leadership skills. Mentoring is one way of helping staff nurses become

1
2 better clinical leaders (Dearmon *et al.*, 2015). These changes take time, but eventually, staff nurses
3
4 grow personally and professionally as they engage in SG activities (Guanxi, 2018).
5
6
7
8

9 Besides leadership skills, nurses need guidance on how to use research and conduct quality
10 improvement processes to resolve system-wide practice issues (Dearmon *et al.*, 2015). Many SG
11 hospitals have engaged with this challenge by incorporating EBP into the SG councils' work methods
12 (Fisher & Hubbard, 2015) or by establishing an organization-wide EBP council (Gallagher-Ford,
13
14
15
16
17
18
19
20
21
22 2015).

23 Porter-O'Grady (1987) described three models of SG, namely the councillor (1), congressional (2),
24 and administrative (3) models. The councillor model (1) facilitates SG through nursing councils,
25 which make system-wide decisions relating to specified areas. The councils are overseen by an
26 executive group that manages issues relating to the whole organization, coordinates the council's
27 work, and integrates the council's work into practice. The congressional model (2) resembles a
28 constitutional government: staff elect an executive and representatives to a nursing cabinet, which
29 usually includes both managers and staff nurses. Finally, the administrative model (3) divides
30 organizational authority between management and clinical forums that are overseen by an executive
31 committee and a nurse executive (Porter-O'Grady, 1987). A fourth unit-based SG model under which
32 SG is only implemented within units and not at the system level was recognized in the 1990s (Yanko
33
34
35
36
37
38
39
40
41
42
43
44
45
46
47
48
49
50
51
52
53
54
55
56
57
58
59
60
et al. 1995).

51 Continuous evaluation of SG is recommended for successful human resource management and
52 improvement of healthcare service quality (Gerard *et al.*, 2016). The most widely used tool for
53 assessing SG is "The Index of Professional Nursing Governance" (IPNG) (Hess, 1998; 2011), which
54 measures six aspects of SG: professional control, organizational influence, organizational
55 recognition, facilitating structures, liaison, and alignment. IPNG scores indicate which part of the SG

1
2 range an organization occupies. The range extends from nursing management or administration only
3
4 to staff nurses only, with the middle part of the range corresponding to a situation in which SG is
5
6 equally distributed between staff nurses, nursing managers, and administrators (Hess, 1998). IPNG
7
8 is considered the gold standard for surveying SG (Di Fiore *et al.*, 2018).
9
10

11
12
13
14 Another way of evaluating SG is to measure structural empowerment in the organization (Joseph &
15
16 Bogue, 2016). Kanter's theory of empowerment suggests that in working life, access to information,
17
18 support and resources, as well as opportunities to learn and grow, enable the empowerment of
19
20 employees, which helps them accomplish organizational goals (Laschinger & Wong, 1999).
21
22 Structural empowerment is related to SG via elements such as autonomy, control over the practice
23
24 environment, interprofessional collaboration, and access to information. It is also a contributing factor
25
26 in enhancing magnet organizations and patient safety culture in healthcare (Armstrong & Laschinger,
27
28 2006).
29
30
31

32
33
34
35 Other concepts related to SG are clinical and professional governance. Clinical governance is an
36
37 umbrella term associated with attributes such as quality, continual improvement, standards of care,
38
39 system-orientation, and responsibility (Brennan & Flynn, 2013). It integrates activities targeting
40
41 continuous quality improvement (Som, 2004). SG also shares this objective, although the SG
42
43 literature places greater emphasis on empowering nurses than on SG's benefits to organizations
44
45 (Porter-O'Grady, 2001; Hess, 2004). Professional governance refers to ideas of accountability,
46
47 professional obligation, collateral relationships, and effective decision-making (Clavelle *et al.*, 2016).
48
49 It overlaps with SG via elements such as partnership (Hess, 2004), equity, and a strong emphasis on
50
51 clinical nurses' decision-making (Porter-O'Grady, 2001).
52
53
54
55
56
57

58
59 The last systematic review to evaluate SG was made by O'May & Buchan (1999). Since then, it has
60
been stated that the gap between the concept of SG and its implementation requires study (Anthony,

1
2 2004; Gerard et al., 2016) and that management strategies for implementing SG have not been
3
4 standardized (Church et al., 2008). A need for an operational definition of SG (Joseph & Bogue,
5
6 2016) and for robust assessments of the success of efforts to implement SG and their outcomes have
7
8 also been noted (Anthony, 2004). Moreover, SG has evolved during its existence and continues to
9
10 change. For example, in recent years, millennials have gained a strong footage in health care
11
12 organisations, which has further accelerated the demands of renewing the structures and models that
13
14 support professional nursing practice. (Porter-O'Grady, 2019.)
15
16
17
18
19

20
21 To conclude, this review is the first systematic review of SG written in the 21st century and is needed
22
23 because the concept of SG is broad and because its premises have changed over time. Since SG has
24
25 mainly been implemented and studied in magnet hospitals, this scoping review focuses on hospital-
26
27 based SG. Its purpose is to provide an overview of research on hospital-based SG with a focus on
28
29 core SG elements.
30
31
32
33

34 **2 METHODS**

35
36
37
38
39 A scoping review was conducted to explore and create an overview of the existing literature (Arksey
40
41 & O'Malley, 2005). The methodological frameworks for conducting scoping reviews presented by
42
43 Levac *et al.* (2010) and Arksey & O'Malley (2005) were adopted. To enhance the review's
44
45 transparency and reporting quality, the "PRISMA Extension for Scoping Reviews" checklist was also
46
47 used (Tricco *et al.*, 2018). A three-step search strategy involving an initial search, a database search,
48
49 and screening of the initially selected articles' reference lists was used to increase reliability.
50
51
52
53

54
55
56 Searches were performed using the following keyword combinations: SG (title) OR clinical
57
58 governance (title) OR professional governance (title) AND model (abstract). The database search was
59
60 conducted with the same search strategy in the five databases selected for consideration, yielding the

1
2 following numbers of hits: Medline (Ovid) (100), CINAHL (EBSCO) (348), Medic (a Finnish
3 database) (0), ABI/INFORM Collection (ProQuest) (360), and SveMed+ (a Swedish database) (0).

4
5
6 The review included original research articles published in English, Finnish or Swedish. Because of
7
8 the different ways in which SG can be implemented, only articles that described the applied SG model
9
10 were eligible for inclusion. The beginning of the review's timespan (May 1998 - February 2019)
11
12 corresponds to the end of the timespan of O'May & Buchan's (1999) review of SG. Articles for which
13
14 the full text was unavailable were excluded. In accordance with the criteria for scoping reviews,
15
16 articles included in the review were not subjected to quality assessment (Armstrong *et al.* 2011).
17
18
19
20
21
22

23 The review process was conducted between February and March in 2019 by two independent
24
25 researchers (MK, MH), first on the title and abstract level, then on the full-text level (Arksey &
26
27 O'Malley, 2005). After the selection process, a manual search was conducted by screening the
28
29 reference lists of the selected articles (Armstrong *et al.*, 2011). Refworks was used to facilitate the
30
31 review process, including removal of duplicates. Eight original research articles were identified
32
33 during the database search and five additional articles were identified by screening the reference lists
34
35 of the initial eight articles (Figure 1).
36
37
38
39
40
41

42 The data were charted to identify common indicators of hospital-based SG and its core elements, as
43
44 well as gaps in the literature (Armstrong *et al.* 2011). The charting categories correspond to extracted
45
46 data relevant to the research objective. The categories are authors, year of publication, country, study
47
48 design, participants, response rate, aims, methods used (instruments, statistical methods, and
49
50 analytical methods), models, and key findings (Table 1).
51
52
53
54
55

56 Thematic analysis enables low-level interpretation and was therefore chosen to analyse the research
57
58 articles (Vaismoradi *et al.*, 2013). The analysis was conducted by one researcher (MK), but another
59
60 researcher (MH) was consulted in cases where the first researcher was uncertain. The analytical

1
2 process involved first compiling the data and then separating and grouping it (Castleberry & Nolen,
3
4 2018).

5 6 7 8 **3 RESULTS**

9 10 11 12 13 *Study characteristics*

14
15
16
17
18 All articles selected for inclusion in the review originated from the USA and were published between
19
20 2001 and 2018. The studies were mainly survey-based and used either longitudinal (Frith &
21
22 Montgomery, 2006; Brull, 2015; Allen-Gilliam *et al.*, 2016; Ong *et al.*, 2017; Di Fiore *et al.*, 2018;
23
24 Weaver *et al.*, 2018;) or cross-sectional designs (Howell *et al.*, 2001; Overcash *et al.*, 2012;
25
26 Rheingans, 2012; Wilson *et al.*, 2014; Winslow *et al.*, 2015; Gerard *et al.*, 2016; Giambra *et al.*,
27
28 2018). One study employed a modified Delphi technique (Giambra *et al.*, 2018) and four studies
29
30 utilized mixed methods (Frith & Montgomery, 2006; Winslow *et al.*, 2015; Ong *et al.*, 2017; Giambra
31
32 *et al.*, 2018). The most widely used survey instrument was IPNG or its upgraded version (Howell *et*
33
34 *al.*, 2001; Overcash *et al.*, 2012; Rheingans, 2012; Brull, 2015; Di Fiore *et al.*, 2018; Weaver *et al.*,
35
36 2018).
37
38
39
40
41
42
43

44 *Hospital-based SG models*

45
46
47
48 Three studies accepted participants other than nurses, such as nurse managers and patient care
49
50 technicians (Frith & Montgomery, 2006; Wilson *et al.*, 2014; Giambra *et al.*, 2018). In all of the
51
52 studied settings, SG had originally been established for nurses, but two of the articles examined
53
54 interdisciplinary models (Allen-Gilliam *et al.*, 2016; Giambra *et al.*, 2018). Studies on organizations
55
56 that served only the nursing profession strongly emphasized nurse managers' supporting role.
57
58
59
60

1
2 Most of the studies examined models implemented within the last 5 years (Howell *et al.*, 2001; Frith
3 & Montgomery, 2006; Rheingans, 2012; Wilson *et al.*, 2014; Brull, 2015; Ong *et al.*, 2017; Di Fiore
4 *et al.*, 2018) or recently redesigned models (Winslow *et al.*, 2015; Allen-Gilliam *et al.*, 2016; Gerard
5 *et al.*, 2016; Giambra *et al.*, 2018; Weaver *et al.*, 2018). The models frequently had both a unit-level
6 structure and an organization-wide structure (Frith & Montgomery 2006; Rheingans, 2012; Wilson
7 *et al.*, 2014; Winslow *et al.*, 2015; Brull, 2015; Gerard *et al.*, 2016; Di Fiore *et al.*, 2018; Giambra *et*
8 *al.*, 2018; Weaver *et al.*, 2018). Only two articles described models consistent with Porter-O'Grady's
9 (1987) original classification (Overcash *et al.*, 2012; Rheingans, 2012). The articles described the SG
10 models based on the levels at which SG was implemented (organization-wide, unit-based, or both)
11 and the participants involved (single-profession or interdisciplinary).
12
13
14
15
16
17
18
19
20
21
22
23
24
25
26
27

28 Nine articles described the subjects addressed by the studied organizations' SG councils. Thematic
29 analysis of these subjects revealed five council themes: education and research (Howell *et al.* 2001;
30 Frith & Montgomery 2006; Wilson *et al.* 2014; Brull 2015; Allen-Gilliam *et al.* 2016; Weaver *et al.*
31 2018), professional growth and development (Howell *et al.* 2001; Frith & Montgomery 2006; Brull
32 2015; Winslow *et al.* 2015; Allen-Gilliam *et al.* 2016; Weaver *et al.* 2018), coordination and
33 leadership (Howell *et al.* 2001; Frith & Montgomery 2006; Winslow *et al.* 2015; Allen-Gilliam *et al.*
34 2016; Gerard *et al.* 2016; Di Fiore *et al.* 2018), safety and quality (Frith & Montgomery 2006; Brull
35 2015; Allen-Gilliam *et al.* 2016; Weaver *et al.* 2018), and professional practice (Brull 2015; Winslow
36 *et al.* 2015; Allen-Gilliam *et al.* 2016).
37
38
39
40
41
42
43
44
45
46
47
48
49
50

51 *Core elements*

52
53
54
55

56 Thematic analysis was used to identify the core elements of SG by first analysing the research themes
57 of the articles and then categorizing these themes and using them to identify the core elements of SG.
58 The first phase revealed five research themes – in order of decreasing frequency, the level of SG (1),
59
60

1
2 barriers and facilitators of SG (2), the effect of demographic characteristics on nurses' views of SG
3
4 (3), SG outcomes (4), and shared decision-making (5).
5
6
7
8

9 Most of the articles assessed the level of SG (1) using the IPNG, which emphasizes professionalism
10 as a driver of SG. Few of the studied organizations' IPNG scores were in the SG range, indicating
11 that most of the SG implementations were unsuccessful. Of the six organizations assessed using
12 IPNG, only one exhibited a satisfactory level of SG without improving their SG model (Rheingans,
13 2012). Two other organizations achieved scores in the SG range in the third measurement round after
14 redesigning their SG model (Brull, 2015; Weaver *et al.*, 2018).
15
16
17
18
19
20
21
22
23
24

25 One of these organizations redesigned its SG model based on the wishes of staff, which included
26 more education on SG, better communication and unit-based council meetings, involvement of night
27 shift nurses, and increased participation of nurses in SG activities (Weaver *et al.*, 2018). The second
28 organization also aimed to increase nurses' participation in decision-making at the organization level
29 and added more councils (Brull, 2015). The other studied organizations were perceived to be
30 traditionally governed or led mainly by nursing management (Howell *et al.*, 2001; Overcash *et al.*,
31 2012; Di Fiore *et al.*, 2018). Some studies found that active involvement in SG predicts more positive
32 views of SG across organizational levels (Frith & Montgomery, 2006; Overcash *et al.*, 2012;
33 Rheingans, 2012).
34
35
36
37
38
39
40
41
42
43
44
45
46
47
48

49 Three studies investigated the barriers and facilitators of SG (2). Barriers included disruption of
50 patient care (Wilson *et al.*, 2014) and an information deficit (Giambra *et al.*, 2018). Facilitators
51 included manager support and time to participate in SG activities (Frith & Montgomery, 2006; Wilson
52 *et al.*, 2014; Giambra *et al.*, 2018). Some studies also investigated the effects of nurses' demographic
53 characteristics (e.g. work experience and education) on their view of SG (3) (Howell *et al.* 2001; Frith
54 & Montgomery 2006; Overcash *et al.* 2012; Rheingans 2012; Brull 2015). However, the observed
55
56
57
58
59
60

1
2 correlations between demographic characteristics and views on SG were either non-significant or
3
4 inconsistent.
5
6
7
8

9 Three articles assessed outcomes of SG (4) including self-perceived caring, the safety climate, and
10 job satisfaction (Rheingans, 2012); the professional practice environment, empowerment, teamwork,
11 risk of practice errors, and EBP (Allen-Gilliam *et al.*, 2016); and engagement and turnover (Ong *et*
12 *al.* 2017). Rheingans (2012) examined a councillor model that achieved positive outcomes, but the
13 organization-wide model studied by Allen-Gilliam *et al.* (2016) and the unit-based model studied by
14 Ong *et al.* (2017) both had inconclusive outcomes.
15
16
17
18
19
20
21
22
23
24

25 Shared decision-making (5) was analysed in three studies and addressed in four (Brull 2015; Allen-
26 Gilliam *et al.*, 2016; Giambra *et al.*, 2018; Weaver *et al.*, 2018). Winslow *et al.* (2015) found that
27 once an SG model was implemented and became part of the organizational culture, shared decision-
28 making grew stronger. Gerard *et al.* (2016) found that nurses in the organization desired more
29 decision-making capacity. Similarly, Di Fiore *et al.* (2018) concluded that nurses' assessments of
30 organizational decision-making were less positive than would be desirable.
31
32
33
34
35
36
37
38
39
40
41

42 CQI and EBP were not major research themes of any of the studies. However, EBP served as a
43 framework in one study that evaluated the implementation of SG (Ong *et al.*, 2017). It was also an
44 explicit factor of the SG models considered in four articles (Brull, 2015; Winslow *et al.*, 2015; Allen-
45 Gilliam *et al.*, 2016; Di Fiore *et al.*, 2018). CQI was identified as an objective of the organization's
46 SG model in five articles (Howell *et al.*, 2001; Rheingans, 2012; Wilson *et al.*, 2014; Allen-Gilliam
47 *et al.*, 2016; Ong *et al.*, 2017). It was also a council theme in four organizations (Frith & Montgomery,
48 2006; Brull, 2015; Di Fiore *et al.*, 2018; Weaver *et al.*, 2018).
49
50
51
52
53
54
55
56
57
58
59
60

1
2 Collaboration was another element that was not used as a research theme. However, many of the
3
4 articles highlighted collaboration between professionals (Howell *et al.*, 2001; Wilson *et al.*, 2014),
5
6 between management and staff (Wilson *et al.*, 2014; Gerard *et al.*, 2016; Ong *et al.*, 2017), and
7
8 between organizational levels (Rheingans 2012; Ong *et al.*, 2017) as core elements of successful SG.
9
10

11
12
13
14 Empowerment was mentioned as a main interest in one study (Allen-Gilliam *et al.*, 2016). However,
15
16 when the articles were analysed through Kanter's theory of empowerment, the council themes clearly
17
18 included aspects of empowerment such as professional growth and development as well as
19
20 professional practice, which highlight professionalism and the work force's opportunities for growth
21
22 (Howell *et al.* 2001; Frith & Montgomery 2006; Brull 2015; Winslow *et al.* 2015; Allen-Gilliam *et*
23
24 *al.* 2016; Weaver *et al.* 2018). Other overlapping themes included education, research, and EBP,
25
26 which can all be linked to empowerment through access to information and learning.
27
28
29
30

31
32 The analysis thus revealed six core elements of SG: professionalism, shared decision-making, EBP,
33
34 CQI, collaboration, and empowerment. Of these elements, professionalism is a string that ties
35
36 everything together. Shared decision-making is an element that allows SG to manifest itself, while
37
38 EBP provides a tool for decision-making. CQI is the objective of SG. The element of collaboration
39
40 then represents the values embedded in the SG phenomenon – the idea of working together towards
41
42 shared goals. Empowerment is thus an underlying element that gives momentum to SG.
43
44
45
46
47
48

49 To help organizations establish SG, a framework based on the main findings of this review was
50
51 created by combining the structural choices and core elements identified above to provide an
52
53 overview of SG in hospital settings. The framework is presented in the form of a map of outcomes
54
55 showing the frequency at which each SG factor was discussed in the reviewed articles (Figure 2).
56
57
58
59
60

4 DISCUSSION

This scoping review resumes the tradition of systematically reviewing SG literature, which had not been done in the 21st century (O'May & Buchan 1999). The aim was to review research on hospital-based shared governance, focusing on its core elements. Thematic analysis of the reviewed articles suggests that the core elements of SG in hospital settings are professionalism, shared decision-making, EBP, CQI, collaboration, and empowerment. These core elements are equivalent to those recognized by previous researchers (O'May & Buchan, 1999; Porter-O'Grady, 2001; Anthony, 2004; Hess, 2011), except that CQI and EBP have not previously been linked so directly to SG. The two new elements reflect the changing healthcare environment, which has placed a greater emphasis on patients' rights to first-rate care.

SG is executed in varying ways, as noted previously by Church *et al.* (2008) and Joseph & Bogue (2016). Based on the results obtained here, organizations do not seem to strive for a standardized way of implementing SG because only two articles described models consistent with Porter-O'Grady's (1987) classification. It is thus possible that this classification does not serve the current needs of the healthcare arena. Since this first classification, healthcare organizations and disciplines have evolved, and especially in the nursing field, professional development has changed the way in which the borders of competences, decision-making, and autonomy are defined (Fisher & Hubbard, 2015; Gallagher-Ford, 2015).

This review endorses the research articles' approach of classifying SG models more simply, as being either organization-wide or unit-based, and as being executed within a single profession or an interdisciplinary group. This classification augments organizations' ability to define themselves in relation to other SG organizations while leaving space for innovation. SG can be implemented at different levels depending on organizational priorities (Gallagher-Ford, 2015; Gerard *et al.*, 2016).

1
2 Team characteristics are also important; for example, the implementation of SG in a highly
3
4 experienced ICU nursing team may differ from that in a team consisting mainly of novice nurses.
5
6
7
8

9 *Study limitations*

10
11
12
13

14 The scoping review has several limitations. Firstly, only the most relevant databases were selected as
15
16 information retrieval sources. Two databases in languages other than English were also included to
17
18 obtain an overview of SG research outside English-speaking countries. Secondly, the review only
19
20 included articles that examined SG in hospital settings. Thirdly, the review included only original
21
22 research articles. Other types of articles were excluded because of their variable quality. The review's
23
24 validity was strengthened by consulting a librarian when planning the search strategy. Additionally,
25
26 the search was conducted by two independent researchers, first on the title and abstract level and then
27
28 on the full-text-level. The analysis was then discussed between researchers to add validity.
29
30
31
32
33
34

35 All the included research articles deal with SG even though professional and clinical governance were
36
37 also used as search terms, which might be due to differences in execution. It should also be noted that
38
39 the actual database screening identified eight relevant articles, whereas screening of the included
40
41 articles' reference lists revealed five relevant articles. All the studies included in the review were
42
43 conducted in the USA, possibly due to a language bias. The Finnish and the Swedish databases
44
45 yielded no relevant articles. Additionally, the magnet hospital movement, which has favoured SG,
46
47 has been largely restricted to the USA.
48
49
50
51
52
53
54

55 **5 CONCLUSIONS**

56
57
58
59
60

1
2 Six core elements of SG were identified in this review: professionalism, shared decision-making,
3
4 EBP, CQI, collaboration and empowerment. The findings of this review are summarized in a new SG
5
6 framework consisting of these core elements as well as the participants in the SG process and the
7
8 organizational levels at which SG is implemented. Additionally, our analysis endorses a classification
9
10 of SG in hospital settings that is simpler than that of Porter-O'Grady (1987), with SG organizations
11
12 being classified based on the professionals included in SG activities (single profession and managers
13
14 only or interdisciplinary) and the level at which SG activities are conducted (unit-based, organization-
15
16 wide, or both).
17
18
19
20
21
22

23 The core elements should be monitored to keep up with changes in the healthcare arena. Further
24
25 systematic reviews should be performed periodically to accumulate data on SG, which continues to
26
27 inspire organizations, professionals, and researchers despite the challenges they face. Since many
28
29 organizations found it difficult to achieve a satisfactory level of SG, continued assessment of SG
30
31 levels is recommended, along with further exploration of barriers and facilitators of SG. There is also
32
33 a notable lack of research on the effects of SG on patients, which should be addressed.
34
35
36
37
38
39

40 **6 PRACTICAL IMPLICATIONS**

41
42
43
44

45 Based on the findings of this review, an updated SG framework has been developed. This framework
46
47 could be used to guide and strengthen the implementation of SG and the updated core elements should
48
49 be considered in SG organizations. Additionally, the benefits of SG to organizations and patients as
50
51 well as professionals should be emphasized. By combining EBP and SG, knowledge and knowhow
52
53 can be transferred from professionals to the whole organization through the SG structure, ensuring
54
55 that improvements are not dependent on the presence of specific individuals.
56
57
58
59
60

1
2 The implementation of SG is not always as straightforward as first thought because even more mature
3
4 SG organizations face challenges in meeting the expectations of the workforce. This review shows
5
6 that SG can be achieved, but not without meaningful effort from the facility and its workforce. In
7
8 other words, SG is not for the impatient looking for an easy fix, but for those who truly want to be
9
10 part of an organization that gives a voice to its professionals.
11
12
13
14
15
16
17
18
19
20
21
22
23
24
25
26
27
28
29
30
31
32
33
34
35
36
37
38
39
40
41
42
43
44
45
46
47
48
49
50
51
52
53
54
55
56
57
58
59
60

References

- Allen-Gilliam, J., Kring, D., Graham, R., Freeman, K., Swain, S., Faircloth, G., and Jenkinson, B. (2016), "The impact of shared governance over time in a small community hospital", *Journal of Nursing Administration*, Vol. 46 No. 5, pp. 257-264.
- Anthony, M. K. (2004), "Shared governance models: The theory, practice, and evidence", *Online Journal of Issues in Nursing*, Vol. 22 No. 1, pp. 138-153.
- Arksey, H., and O'Malley, L. (2005), "Scoping studies: Towards a methodological framework", *International Journal of Social Research Methodology*, Vol. 8 No. 1, pp. 19-32.
- Armstrong, R., Hall, B. J., Doyle, J., and Waters, E. (2011), "Cochrane update. 'Scoping the scope' of a cochrane review", *Journal of Public Health (Oxford, England)*, Vol. 33 No. 1, pp. 147-150.
- Armstrong, K. J., and Laschinger, H. (2006), "Structural empowerment, Magnet hospital characteristics, and patient safety culture: making the link", *Journal of Nursing Care Quality*, Vol. 21 No. 2, pp. 124-132.
- Brennan, N. M., and Flynn, M. A. (2013), "Differentiating clinical governance, clinical management and clinical practice", *Clinical Governance*, Vol. 18 No. 2, pp. 114-131.
- Brull, S. (2015), "Successful shared governance through education", *Nursing Economics*, Vol. 33 No. 6, pp. 314-319.
- Castleberry, A., and Nolen, A. (2018), "Thematic analysis of qualitative research data: Is it as easy as it sounds?" *Currents in Pharmacy Teaching and Learning*, Vol. 10, pp. 807-815.
- Church, J. A., Baker, P., and Berry, D. M. (2008), "Shared governance: A journey with continual mile markers", *Nursing Management*, Vol. 39 No. 4, pp. 34-38.
- Clavelle, J. T., O'Grady, T. P., and Drenkard, K. (2013), "Structural empowerment and the nursing practice environment in magnet® organizations." *Journal of Nursing Administration*, Vol. 43 No. 11, pp. 566-573.
- Dearmon, V., Riley, B., Mestas, L., and Buckner, E. (2015), "Bridge to shared governance: Developing leadership of frontline nurses", *Nursing Administration Quarterly*, Vol. 39 No. 1, pp. 69-77.
- Di Fiore, T., Zito, A., Berardinelli, A., Bena, J. F., Morrison, S. L., Keck, D. E., . . . Albert, N. M. (2018), "Staff perceptions of decision-making in a shared governance culture", *Journal of Nursing Administration*, Vol. 48 No. 11, pp. 561-566.
- Fisher, C., and Hubbard, M. (2015), "Extending evidence through shared governance", *Nursing Management*, Vol. 46 No. 7, pp. 16-18.
- Frith, K., and Montgomery, M. (2006), "Perceptions, knowledge, and commitment of clinical staff to shared governance", *Nursing Administration Quarterly*, Vol. 30 No. 3, pp. 273-284.
- Gallagher-Ford, L. (2015), "Leveraging shared governance councils to advance evidence-based practice: The EBP council journey", *Worldviews on Evidence-Based Nursing*, Vol. 12 No. 1, pp. 61-63.

- Gerard, S., Owens, D., and Oliver, P. (2016), "Nurses' perception of shared decision-making processes: Quantifying a shared governance culture", *Journal of Nursing Administration*, Vol. 46 No. 9, pp. 477-483.
- Giambra, B., Kneflin, N., Morath, H., Lee, J., Lin, L., and Morris, E. (2018), "Meaningful Participation and Effective Communication in Shared Governance", *Nurse Leader*, Vol. 16 No. 1, pp. 48-53.
- Guanci, G. (2018), "The nurse manager's role in a shared governance culture", *Nursing Management*, Vol. 49 No. 6, pp. 46-50.
- Hess, R. (1998), "Measuring nursing governance." *Nursing Research*, Vol. 47 No. 1, pp. 35-42.
- Hess, R. (2004), "From bedside to boardroom - nursing shared governance", *Online Journal of Issues in Nursing*, Vol. 9 No. 1.
- Hess, R. (2011), "Slicing and dicing shared governance: In and around the numbers", *Nursing Administration Quarterly*, Vol. 35 No. 3, pp. 235-241.
- Howell, J., Frederick, J., Olinger, B., Leftridge, D., Bell, T., Hess, R., and Clipp, E. (2001), "Can nurses govern in a government agency?" *Journal of Nursing Administration*, Vol. 31 No. 4, pp. 187-195.
- Joseph, L., and Bogue, R. (2016), "A theory-based approach to nursing shared governance", *Nursing Outlook*, Vol. 64 No. 4, pp. 339-351.
- Laschinger, H., and Wong, C. (1999), "Staff nurse empowerment and collective accountability: effect on perceived productivity and self-rated work effectiveness", *Nursing Economic\$,* Vol. 17 No. 6, pp. 308-351.
- Levac, D., Colquhoun, H., and O'Brien, K. (2010), "Scoping studies: Advancing the methodology", *Implementation Science*, Vol. 5 No. 69, pp. 1-9.
- Morgan, S., Lahman, E., and Hagstrom, C. (2006), "The Magnet Recognition Program®: Transforming Healthcare Through Excellence in Nursing Services", *Journal of Nursing Care Quality*, Vol. 21 No. 2, pp. 119-120.
- O'May, F., and Buchan, J. (1999). Shared governance: A literature review. *International Journal of Nursing Studies*, 36(4), 281-300.
- Ong, A. (2017), "Ripple effect: Shared governance and nurse engagement", *Nursing Management*, Vol. 48 No. 10, pp. 28-34.
- Ott, J., and Ross, C. (2014), "The journey toward shared governance: The lived experience of nurse managers and staff nurses", *Journal of Nursing Management*, Vol. 22 No. 6, pp. 761-768.
- Overcash, J., Petty, L. J., and Brown, S. (2012), "Perceptions of shared governance among nurses at a midwestern hospital", *Nursing Administration Quarterly*, Vol. 36 No. 4, pp. 1-11.
- Porter-O'Grady T (1987), "Shared Governance and New Organizational Models", *Nursing Economic\$,* Vol. 5 No. 6, pp. 281-286.
- Porter-O'Grady, T. (2001), "Is shared governance still relevant?", *Journal of Nursing Administration*, Vol. 31 No. 10, pp. 468-473.
- Porter-O'Grady, T. (2012), "Reframing knowledge work: Shared governance in the postdigital age", *Creative Nursing*, Vol. 18 No. 4, pp. 152-159.

1
2 Porter-O'Grady, T. (2019), "Principles for sustaining shared/ professional governance in nursing",
3 *Nursing Management*, Vol. 50 No. 1, pp. 36-41.
4

5 Rheingans, J. I. (2012), "The alchemy of shared governance: Turning steel (and sweat) into gold",
6 *Nurse Leader*, Vol. 10 No. 1, pp. 40-42.
7

8 Som, C. (2004), "Clinical governance: a fresh look at its definition. *Clinical Governance: An*
9 *International Journal*", Vol. 9 No. 2, pp. 87-90.
10

11 Tricco, A., Lillie, E., Zarin, W., O'Brien, K., Colquhoun, H., Levac, D., . . . Straus, S. (2018),
12 "PRISMA extension for scoping reviews (PRISMA-ScR): Checklist and explanation", *Annals of*
13 *Internal Medicine*, Vol. 169 No. 7, pp. 1-6.
14

15 Yanko, J. R., Hardt, M., and Bradstock, J. (1995), "The clinical nurse specialist role in shared
16 governance", *Critical Care Nursing Quarterly*, Vol. 18 No. 3, pp. 87-90.
17

18 Vaismoradi, M., Turunen, H., and Bondas, T. (2013), "Content analysis and thematic analysis:
19 Implications for conducting a qualitative descriptive study", *Nursing and Health Sciences*, Vol. 15
20 No. 3, pp. 398-405.
21

22 Weaver, S. H. (2018), "Measuring shared governance: One healthcare system's experience",
23 *Nursing Management*, Vol. 49 No. 10, pp. 11-14.
24

25 Wilson, J., Gabel Speroni, K., Jones, R. A., and Daniel, M. G. (2014), "Exploring how nurses and
26 managers perceive shared governance", *Nursing*, Vol. 44 No. 7, pp. 19-22.
27

28 Winslow, S., Hougan, A., Deguzman, P., and Black, A. (2015), "The voice of the nurse... What's
29 being said about shared governance?", *Nursing Management*, Vol. 46 No. 3, pp. 46-51.
30
31
32
33
34
35
36
37
38
39
40
41
42
43
44
45
46
47
48
49
50
51
52
53
54
55
56
57
58
59
60

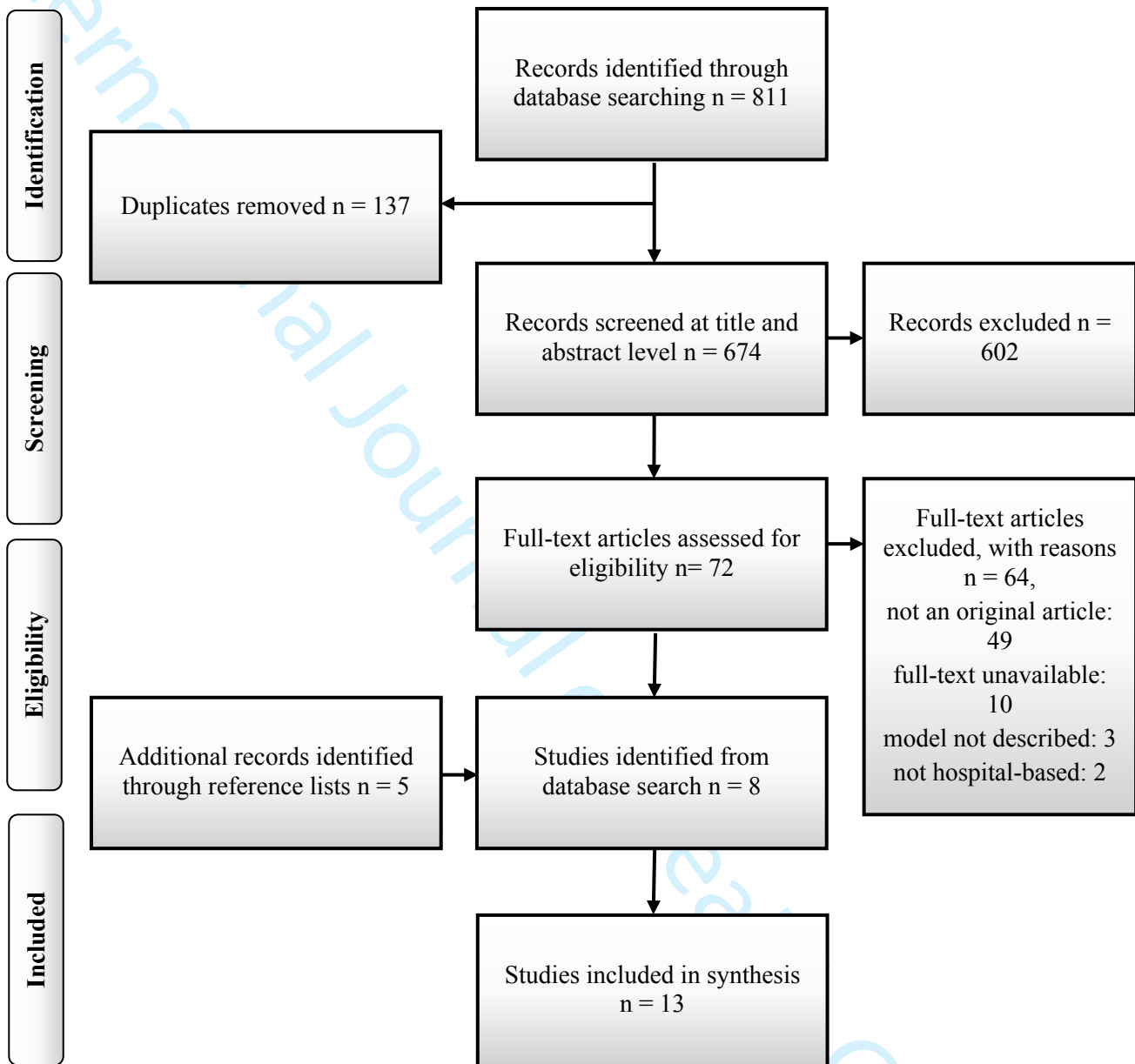


Figure 1. Flowchart of the article selection process. Adapted from Moher et al. (2009).

Table 1. Data extracted from the research articles.

Author(s), year of publication, country	Design, participants, response rate (rr)	Aims	Methods (instruments, statistical methods, methods of analysis)	SG model	Key findings
Howell et al. 2001 USA	a cross-sectional study, n=183 RNs*, rr=67%	to measure perceptions of SG** two years after its implementation and to determine whether nurse characteristics affect the perceived level of SG	a survey utilizing IPNG*** and statistical analysis, including descriptive statistics and measures of central tendency	organizational-wide councils	the organization is perceived to be traditionally governed; nurse demographics do not significantly correlate with IPNG scores
Frith & Montgomery 2006 USA	a longitudinal study, n=687 RNs, licensed practical nurses, care technicians, and medical receptionists, rr=33% second round: n=961, rr=48% focus group interviews, n=68 clinical and managerial staff	to explore perceptions and knowledge of SG as well as commitment to SG before and after its implementation	a survey utilizing the Shared Governance Survey adapted from Minors et al., statistical analysis, including descriptive statistics	unit level and organizational-wide councils	implementation of SG is time-consuming, but staff remain committed to it; facilitating factors of SG include management support, providing time for council work and educating council members about SG; monthly council meetings and greater than 50% attendance predict more positive views
Rheingans 2012 USA	a cross-sectional study, n=140 nurses	to determine whether SG is present in the organization five years after its implementation and to investigate if SG resulted in improvements	a survey utilizing IPNG, the Caring Nurse-Patient Interactions Scale, the Measure of Job Satisfaction and the Safety Climate Survey as instruments, statistical analysis, including regression analyses	“a councillor model”: unit level and organizational-wide councils	IPNG score is in the SG range; work status, hospital unit, participation in hospital-wide councils, and professional certification affect nurses’ evaluations
Overcash et al. 2012 USA	a cross-sectional study, n=100 RNs	to determine whether demographic variables affect nurses’ level of perceived SG	a survey utilizing IPNG and statistical analysis, including analysis of	“a councillor model” with organizational-wide councils	the governance model is perceived to be primarily led by nursing management /administration

			variance and regression models as well as general linear models		with some staff nurse input; having a role in SG and working in in-patient settings affects evaluation
Wilson et al. 2014 USA	a cross-sectional study, n=144 RNs and nurse managers, r=44%	to determine which factors affect SG participation and whether there are differences between staff nurses' and nurse managers' perceptions	a survey utilizing a 26-item instrument created for the study, statistical analysis, including frequency distributions, Chi-square analysis and Fisher's exact tests	unit level and organization-wide councils	staff nurses' participation in SG is increased when they work as a team, are supported by nurse managers, get compensation for participating, and participation does not disrupt patient care
Winslow et al. 2015 USA	a cross-sectional study, n=113 RNs, r=25%	to determine whether the SG model meets the needs of shared decision-making after organizational changes and to measure nurses' understanding of SG	a survey utilizing an instrument developed for the study, thematic and statistical analysis, including calculation of means and the Mann-Whitney U test	unit level and organization-wide councils	77 % believed SG gives nurses a voice in decision-making, 80 % agreed they had adequate resources and encouragement to make council work meaningful; qualitative themes: SG is a pathway for nurses to have a strong voice, it is based on ownership of the practice environment and various disciplines identifying issues and collaborating to identify solutions
Brull 2015 USA	a longitudinal study, n=88 nurses, r=34% second round: n=140, r=50% third round: n=107, r=41%	to determine whether an education plan strengthened SG by assessing changes in the level of SG, and to evaluate the impact of demographic variables on SG scores	a survey utilizing IPNG and statistical analysis, including frequency distributions and variance analysis	unit level and organization-wide councils	a strategic approach to SG implementation had a significant effect; the baseline IPNG score indicated a traditionally governed organization but the score increased marginally after one year and entered the SG range after two years

					clinicians to council representatives was considered important
Weaver et al. 2018 USA	a longitudinal study in two-year intervals, n=469 nurses second round: n=326 third round: n=599	to identify the strengths and weaknesses of the SG model as well as the opportunities it presents and threats it faces, and after the second round, to evaluate the redesigned SG model	surveys using IPNG 2.0 and 3.0, statistical analysis, including descriptive statistics	unit level and organization-wide councils	first and second round evaluations placed the organization in the traditional governance range but after redesigning the model, the organization reached the SG range
Di Fiore et al. 2018 USA	a longitudinal study, n=106 RNs, rr=14 round two: n=197, rr=27%	to examine nurses' perceptions of shared decision-making immediately after implementing SG and 3 years afterwards	a survey using IPNG and statistical analysis, including a multivariable linear regression model	unit level and organization-wide councils as well as a nursing congress (council)	the governance was perceived to be primarily completed by nurse managers and the IPNG score improved only slightly in the second round

*RN = registered nurse, **SG = shared governance, ***IPNG = The Index of Professional Nursing Governance

1
2
3
4
5
6
7
8
9
10
11
12
13
14
15
16
17
18
19
20
21
22
23
24
25
26
27
28
29
30
31
32
33
34
35
36
37
38
39
40
41
42
43
44
45
46
47
48
49
50
51
52
53
54
55
56
57
58
59
60

International Journal of Health Governance

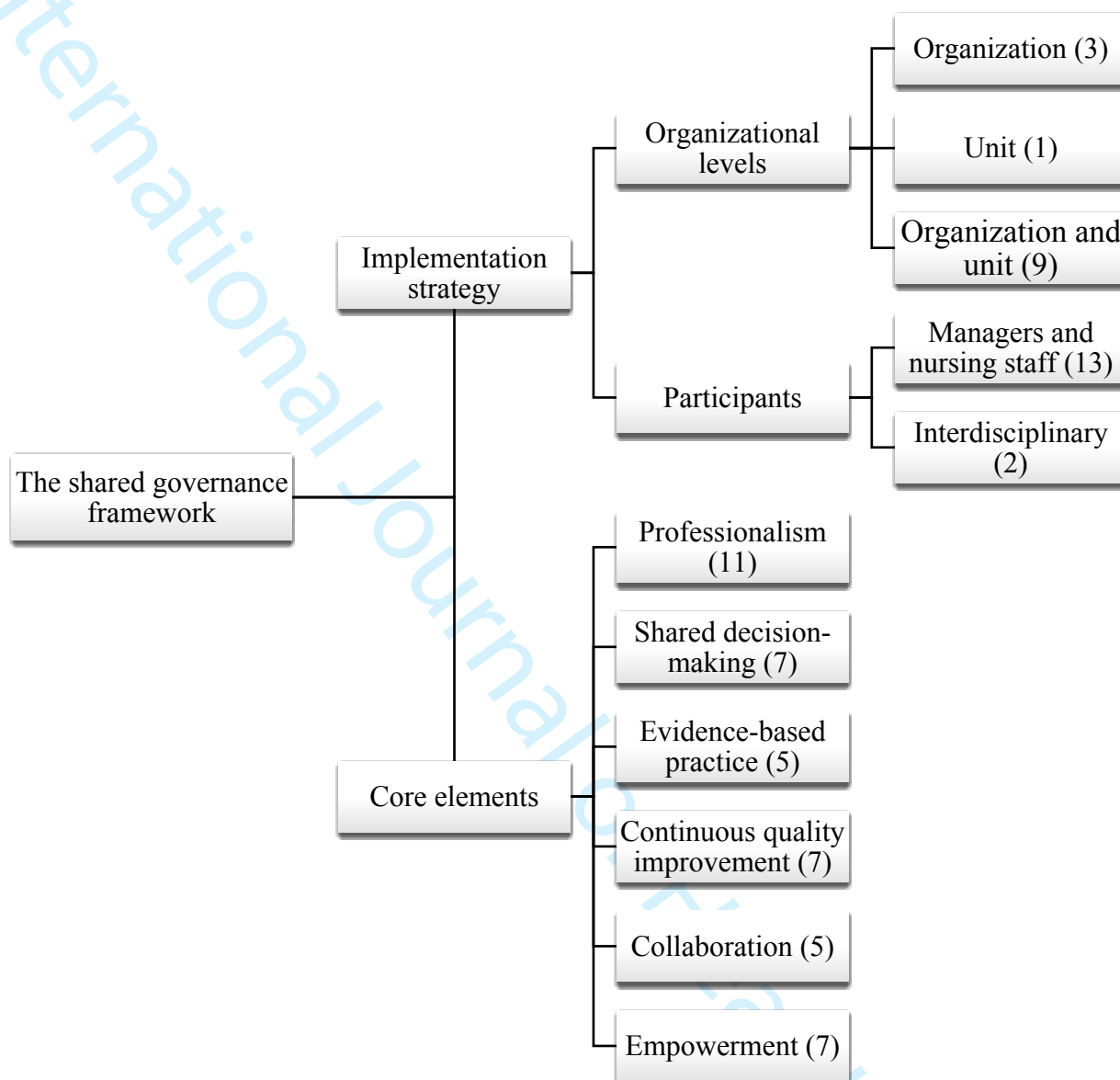


Figure 2. The shared governance framework presented as a map of outcomes. Numbers in parentheses indicate the number of articles included in the scoping review that discussed the corresponding elements and types of implementation strategy.