

A CFD and Experimental Investigation of Slag Eye in Gas Stirred Ladle

Eshwar Kumar Ramasetti, Ville-Valtteri Visuri, Petri Sulasalmi, Timo Fabritius

Process Metallurgy Research Unit, University of Oulu

PO Box 4300, 90014 University of Oulu, Oulu, Finland

eshwar.ramasetti@oulu.fi; ville-valtteri.visuri@oulu.fi; petri.sulasalmi@oulu.fi; timo.fabritius@oulu.fi

Abstract - In ladle metallurgy, gas stirring and behavior of the slag layer are very important for the quality of the steel. When gas is injected through a nozzle located at the bottom of the ladle into the metal bath, the gas jet exiting the nozzle breaks up into gas bubbles. The rising bubbles break the slag layer and create a slag eye. In this paper, the behavior of the slag eye area for different gas flow rates is been investigated through experimental measurements and CFD simulations. A 1/5-scale water model of 150 ton-ladle was deployed for the experimental measurements and for studying the effect of gas flow rate on the slag eye diameter. The physical modelling results show that the slag eye area changes from 20 to 182 cm² when the gas flow rate increases from 1.5 to 15 NL/min. The dimensionless area of the open eye was found to be in agreement with earlier studies. The simulations were carried out in the commercial CFD code ANSYS Fluent with mesh generation in ANSYS Workbench. The numerical model developed is based on the Eulerian Multiphase Volume of Fluid (VOF) approach and employs standard $k - \varepsilon$ turbulence model for solving the turbulent liquid flow induced by bubble-liquid interaction. The simulation results of slag eye area showed a good agreement when compared to experimental results measured.

Keywords: CFD, Ladle Metallurgy, Slag Layer, Multi-Phase Flows, Volume of Fluid (VOF) Model.

Nomenclature

ρ	density (kg/m ³)	k	turbulent kinetic energy (m ² /s ²)
u	fluid velocity (m/s)	ε	turbulent dissipation rate (m ² /s ³)
μ	effective viscosity (Pa·s)	μ_t	turbulent eddy viscosity (Pa·s)
g	gravitational acceleration (m/s ²)	$\vec{F}_{b,i}$	additional force vector (kg/(m ² s ²))
P	pressure (Pa)	α_q	phase volume fraction (-)
μ_e	effective turbulent viscosity	R	production term

1. Introduction

In secondary metallurgy, gas stirring is extensively used for removal of inclusions, homogenization of chemical composition, temperature and desulphurization. The behavior of the slag layer plays an important role in refining the liquid steel as the efficiency of metal-slag reactions depend on the interaction between slag and steel created by gas stirring during the production process. To boost the interaction between steel and slag, and to stimulate the desulphurization reaction, gas is injected to the molten steel through the porous plug located at bottom of ladle. The bubbles formed due to the gas injection in the column rises and infringes the slag layer forming slag eye. The slag eye formation in an industrial ladle is shown in **Fig. 1**. **Fig. 2** presents a schematic illustration of the gas-stirring process in a ladle. The investigation of the three-phase flows associated in this process is very important for the production of steel [1].

Over the years, many experimental measurements have been conducted to study the flow analysis, open eye formation and mixing time in the gas stirred ladle [2-6]. Wu et al. (7) measured the open size in a 1/5-scale water model of a 170-t steel ladle. Water and silicone oil were employed for modelling liquid steel and slag, respectively. Experimental measurements were conducted to study the effect of oil viscosities and gas flow rate on the open-eye size in the ladle. The results showed that the open-eye size increased with an increase in the gas flow rate, while oil viscosities had only a minor effect on the open-eye size. Krishapisharody et al. (8) performed measurements for slag open eye using a 1/10-scale model of a steel ladle. The measurements were conducted for three different bath heights and range of slag layer thickness heights. The results showed the size of the open eye increases with increase in the gas flow rate and decreases as the slag

layer thickness increases. Liu et al. (9) measured slag eye area in a water model for different gas flow rates, slag layer thickness and porous plug locations.

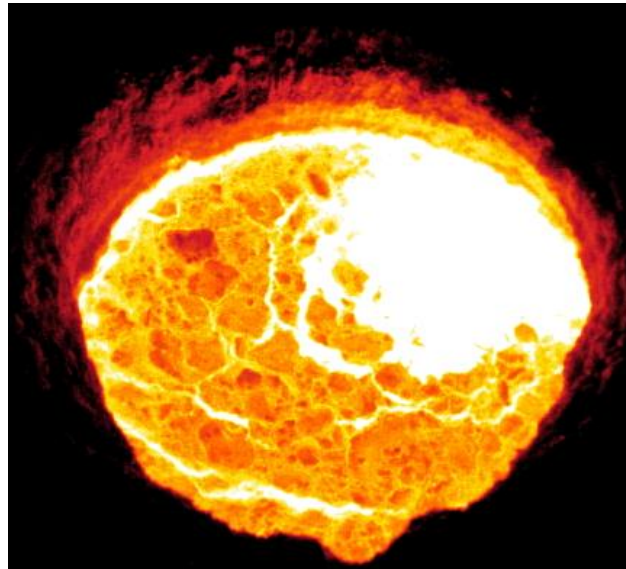


Fig. 1: The slag open-eye formation in real ladle.

Several numerical simulation models [10-13] have been proposed for investigating the fluid flow and mixing phenomena in gas stirred ladles. Mazumdar et al. (14) made an extensive review of physical modelling, combined physical and mathematical modelling and mathematical modelling studies. Liu et al. (15) investigated the fluid flow and steel/slag/air interface behavior in argon stirred ladle through numerical simulations. The performed simulations were based on Eulerian Volume of Fluid (VOF) model and standard $k - \epsilon$ turbulence model with three different porous plug configurations. The results showed that the flow pattern of the molten steel is dependent on the plug configurations and gas flow rate. Ramirez-Argaez (16) also performed the same kind of numerical work in investigating the effect of gas flow rate, plug location and number of plugs on the flow analysis in the ladle.

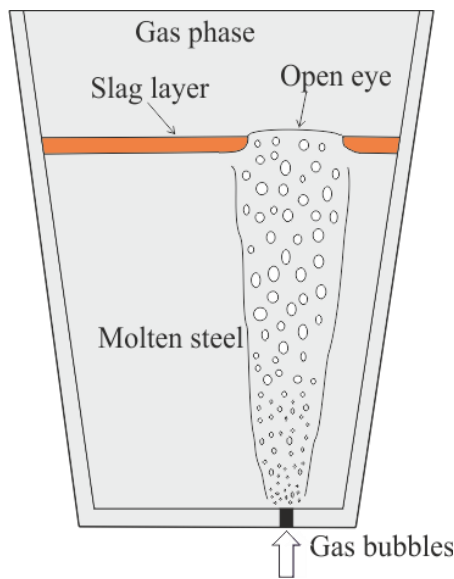


Fig. 2: Schematic illustration of gas-stirring in a ladle.

Recently, Li et al. (17) used a Multiphase VOF model coupled with a population balance model (PBM) and the RNG $k - \varepsilon$ turbulence model to investigate the effect of gas flow rate on the volume fraction of gas and bubble diameter in water model ladle. Cloete et al. (18) did a similar kind work in studying the influence of design variables on the flow analysis in full-scale gas stirred ladles with the same approach used by Li et al. (17). On the other hand, there is little quantitative information on the effect of gas flow rate on the slag eye formation.

A comprehensive understanding of the effect of gas flow rate on the slag eye is a crucial requirement for today's steel industry to produce high strength steels. The present study intends at attaining a better understanding of slag eye formation for different flow rates with eccentric single porous plug in a water model. The deployed water model is of 1/5 scale of 150-ton steelmaking ladle. The dimensionless area of slag eye relation with modified Froude number is been discussed and compared to the experimental data available in literature. For the numerical simulations, the VOF model is been used to track the slag eye behavior for different gas flow rates. The numerical simulation results of slag eye are validated to the experimental measurements measured.

2. Mathematical Modelling

A set of Navier-Stokes equations is solved for the liquid phase and a discrete-phase model is used for the gas phase. The continuity and momentum equations of the liquid phase are defined by Eqs. 1 and 2, respectively. A more detailed description of Eqs. 1 and 2 is available in the literature. (15-18).

$$\frac{\partial \rho}{\partial t} + \frac{\partial(\rho u_i)}{\partial t} = 0, \quad (1)$$

$$\frac{\partial(\rho u_i)}{\partial t} + \frac{\partial(\rho u_i u_j)}{\partial t} = -\frac{\partial p}{\partial x_i} + \frac{\partial}{\partial x_i} \left[\mu_e \left[\frac{\partial u_i}{\partial x_i} + \frac{\partial u_i}{\partial x_i} \right] \right] + \rho g_i + \vec{F}_{b,i}, \quad (2)$$

where u_i is the fluid velocity, ρ is the density, p is the pressure, μ_e is the effective turbulent viscosity, and g_i is the gravitational acceleration and $\vec{F}_{b,i}$ is the additional force vector.

2.1. Turbulent equations

In this work, the standard $k - \varepsilon$ turbulence model was employed. The model solves control equations for the turbulent kinetic energy and turbulent dissipation rate, which are given by Eqs. 3 and 4, respectively.

$$\rho \left(\frac{\partial k}{\partial t} + u_i \frac{\partial k}{\partial x_i} \right) = \frac{\partial}{\partial x_i} \left[\left(\mu + \frac{\mu_t}{\sigma_k} \right) \frac{\partial k}{\partial x_i} \right] + R - \rho \varepsilon, \quad (3)$$

$$\rho \left(\frac{\partial \varepsilon}{\partial t} + u_i \frac{\partial \varepsilon}{\partial x_i} \right) = \frac{\partial}{\partial x_i} \left[\left(\mu + \frac{\mu_t}{\sigma_\varepsilon} \right) \frac{\partial \varepsilon}{\partial x_i} \right] + \frac{\varepsilon}{k} (C_1 R - C_2 \rho \varepsilon), \quad (4)$$

where μ_t is turbulent eddy viscosity, R is the generation of turbulent kinetic energy due to the mean velocity gradients as defined by Eq. 4, and C_1 and C_2 are empirical constants, which were set to their default values $C_1 = 1.44$ and $C_2 = 1.92$.

$$R = \mu_t \frac{\partial u_j}{\partial x_i} \left(\frac{\partial u_i}{\partial x_j} + \frac{\partial u_j}{\partial x_i} \right), \quad (4)$$

2.2. VOF model

The VOF model is able to model two or more immiscible fluids by solving single set of momentum equations and tracking the volume fraction of each fluid throughout the domain. In this work, it is used to track the interfaces of liquid steel, slag and gas. The governing equation can be presented as follows:

$$\frac{1}{\rho_q} \left[\frac{\partial}{\partial t} (\alpha_q \rho_q) + \nabla \cdot (\alpha_q \rho_q \vec{u}_q) \right] = 0, \quad (6)$$

where the volume fraction α_q is constrained by $\sum_{q=1}^n \alpha_q = 1$. When the VOF model is used, single momentum equation is solved by sharing the velocity fields. The momentum equation is defined as follows:

$$\frac{\partial}{\partial t} (\rho \vec{u}) + \nabla \cdot (\rho \vec{u} \vec{u}) = -\nabla p + \nabla \cdot [\mu (\nabla \vec{u} + \nabla \vec{u}^T) + \rho \vec{g} + \vec{F}_p], \quad (7)$$

where ρ is the density, u is the fluid velocity, μ is the effective viscosity, g is the gravitational acceleration, P is the pressure, and \vec{F}_p represents the forces acting between the phases..

3. Experimental Details

In the present study, a one-fifth scale water model of 150-ton ladle was established to study the effect of stirring rate on the slag open eye area. A video camera was mounted on the top of the water model to monitor the development of the open eye. During the experiment, air was injected into the ladle through the nozzle located at bottom for stirring rates ranging from 1.5 to 15 NL/min. To simulate gas stirring in actual process, the water and oil were used respectively. The *ImageJ* software was used for measuring the slag open eye area. The details of the dimensions of water model ladle and material properties are shown in Table 1.

Table 1: Parameters for experiments and simulations.

Parameters	Value
Bottom diameter of the ladle (mm)	273.3
Top diameter of the ladle (mm)	298.4
Height of the ladle (mm)	755
Water level depth in the ladle (mm)	520
Nozzle diameter (mm)	8
Slag layer thickness (mm)	40
Plug radial position	0.54R
Density of water (kg/m ³)	997.2
Dynamic viscosity of water (Pa·s)	0.000891
Density of rapeseed oil (kg/m ³)	907.3
Dynamic viscosity of oil (Pa·s)	0.0778
Density of air (kg/m ³)	1.258
Dynamic viscosity of air (Pa·s)	1.846×10^{-5}

4. Numerical Solution Procedure

The simulations were carried out in the commercial code ANSYS Fluent software. The dimensions of the model are presented in Table 1. Trial calculations were conducted to study the mesh independency using different meshes with a total number of 229149, 488020 and 865130 cells. The error between the results of the slag eye area between 229149 and 488020 cells meshes was found to be approximately 5% and between 488020 and 865130 cells meshes was 2%. In taking consideration of the computational time, the optimum mesh with 488020 cells was selected for the simulations, which is shown in **Fig. 3**. At the inlet of the ladle, velocity inlet boundary condition was used and pressure outlet condition at the outlet of the ladle top. The no-slip boundary condition were taken to the ladle walls, and standard wall function to the near

wall. The finite volume technique was used for the discretization of conservation equations and SIMPLE scheme is used for pressure-velocity coupling. The convergence criterion was set to be 10^{-6} and a variable time step is used by setting the Courant number to one. The data was collected when the flow reached steady state at around 20 sec.

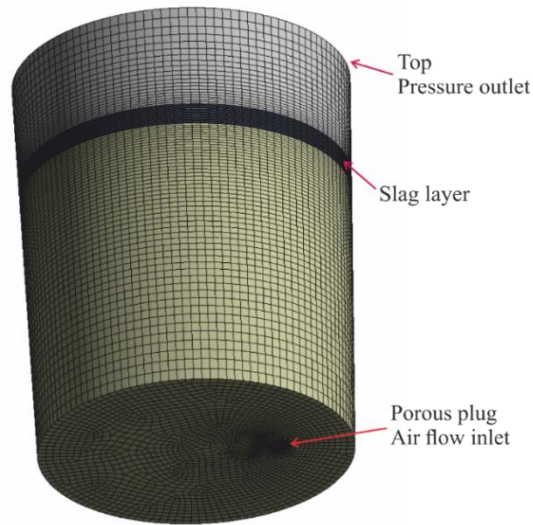


Fig. 3: The mesh and boundary conditions.

5. Results and Discussion

It is very important to investigate the effect of gas flow rate on the slag eye opening as the efficiency of metal-slag reactions depend heavily on the interaction behavior between slag and steel created by gas stirring. The effect of gas flow rate on the slag open-eye area for 40 mm oil layer thickness was investigated experimentally. The experimental data measured of slag eye area is compared to the existing physical models available in the literature. Krishnapisharody and Irons (8) developed a mechanistic model for measuring the slag eye size for water model from fundamental fluid flow considerations. This model formulates the dimensionless area in terms of density ratio of the fluids and Froude number. The dimensionless area is expressed in terms of modified Froude number with the following correlation (8).

$$\frac{A_e}{H^2} = -0.15 + 0.574 \left(\frac{\rho_l}{\Delta\rho} \right)^{0.5} \left(\frac{U_p^2}{gh} \right)^{0.5}, \quad (8)$$

where $\Delta\rho$ is the density difference between water and oil, U_p is the average plume rise velocity, A_e is the slag eye area, H is the height of the water level depth and $\rho_l U_p^2 / \Delta\rho gh$ is the densimetric Froude number.

Fig. 4 indicates that dimensionless slag eye area obtained by the present water model may be somewhat higher when compared to the literature data. These measured experimental results of slag eye area were used for validating the numerical simulations.

Figs. 5 to 8 displays the comparison of increment of slag open-eye area of the experimental and simulation results. A smaller slag eye opening occurs when the flow rate of 1.5 NL/min is used, which is shown in **Fig. 5** and the slag open-eye formation was not observed to occur if the flow rate was lower than this. The flow rate of 1.5 NL/min generated a slag eye in diameter of approximately 5.05 cm in physical modelling, whereas 5.17 cm from simulation results. The diameter of slag open-eye expanded to 7.51 cm when flow rate elevated to 3.5 NL/min, which shows a good agreement to 7.14 cm measured experimentally (see **Fig. 6**). When gas flow rate was increased to 7.5 NL/min, the diameter of slag open-eye enlarges to 11.28 cm, which was somewhat larger than this value obtained from the simulations (**Fig. 7**). The slag open-eye expanded from 11.28 to 15.26 cm shown in **Fig. 7** when flow rate marked up to 15 NL/min, which was not quite agreeable with simulation result.

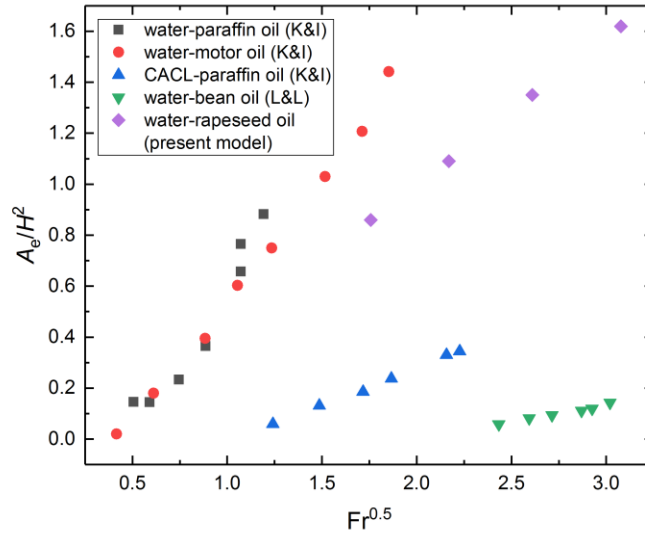


Fig. 4: Nondimensional eye area vs. modified Froude number; K&I=Krishnapisharody and Irons (8) and L&L= Li and Li (9).

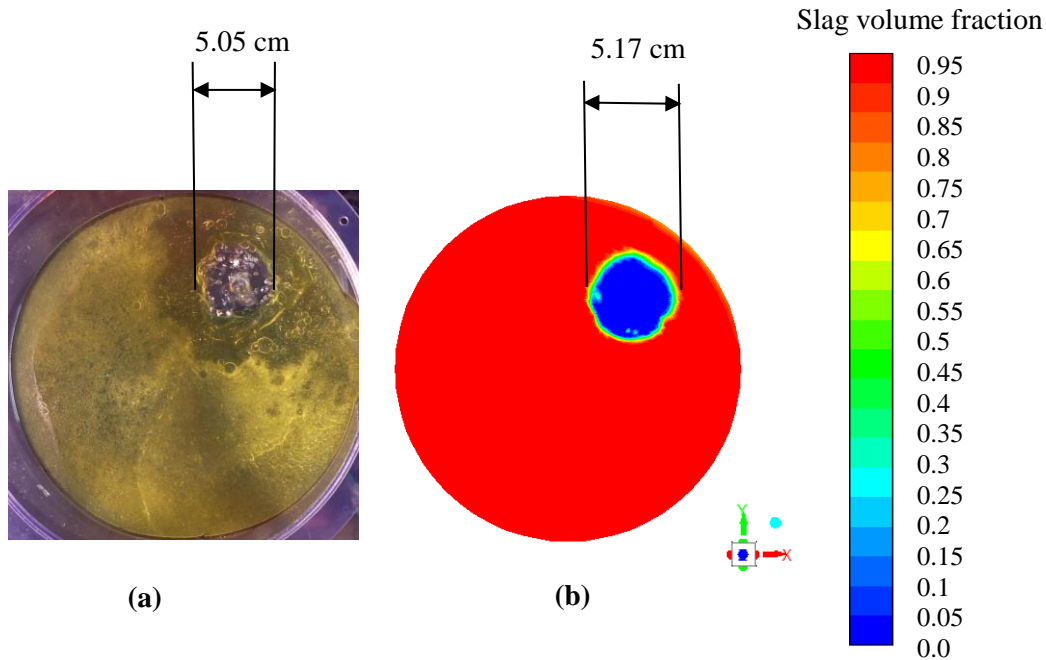


Fig. 5: The slag open eye size for a gas flow rate 1.5 NL/min: (a) experimental and (b) simulation.

At high gas flow rates (7.5 and 15 NL/min), it was observed that there is significant deformation of slag layer during gas stirring, and the thickness of the slag layer becomes thin near the open eye. When the gas flow rate is increased beyond 15 NL/min, the open eye became highly dynamic and the fluid flow became more turbulent. The alteration of slag eye size with gas flow rate proves that the slag eye area increases with increase in gas flow rate, which can be seen in **Figs. 5 to 8** for both experiments and simulations. The increment in slag eye area when the gas flow rate is increased from 1.5 to 15 NL/min is displayed in **Fig. 9**. The slag eye area increases from 20 to 182 cm² for physical modelling and 21 to 205 cm² for numerical simulations.

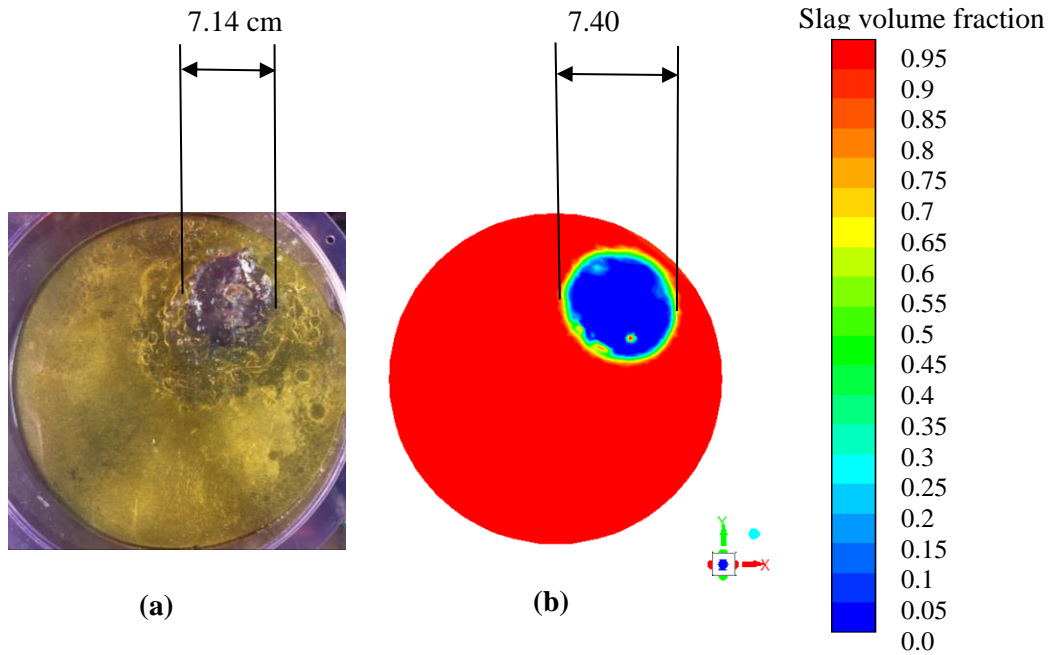


Fig. 6: The slag eye size for a gas flow rate 3.5 NL/min: (a) experimental and (b) simulation.

The relative percentage error between the experimental and simulation results of slag eye area and diameter with the increase in the gas flow rate is depicted in **Fig. 10**. When the gas flow rate increased from 1.5 to 15 NL/min, the relative error in the area of the open eye increased from 5.0 to 12.6%, while the error in the open eye diameter increased from 2.4 to 5.9%. In view of the complexity of the studied case, the agreement is satisfactory.

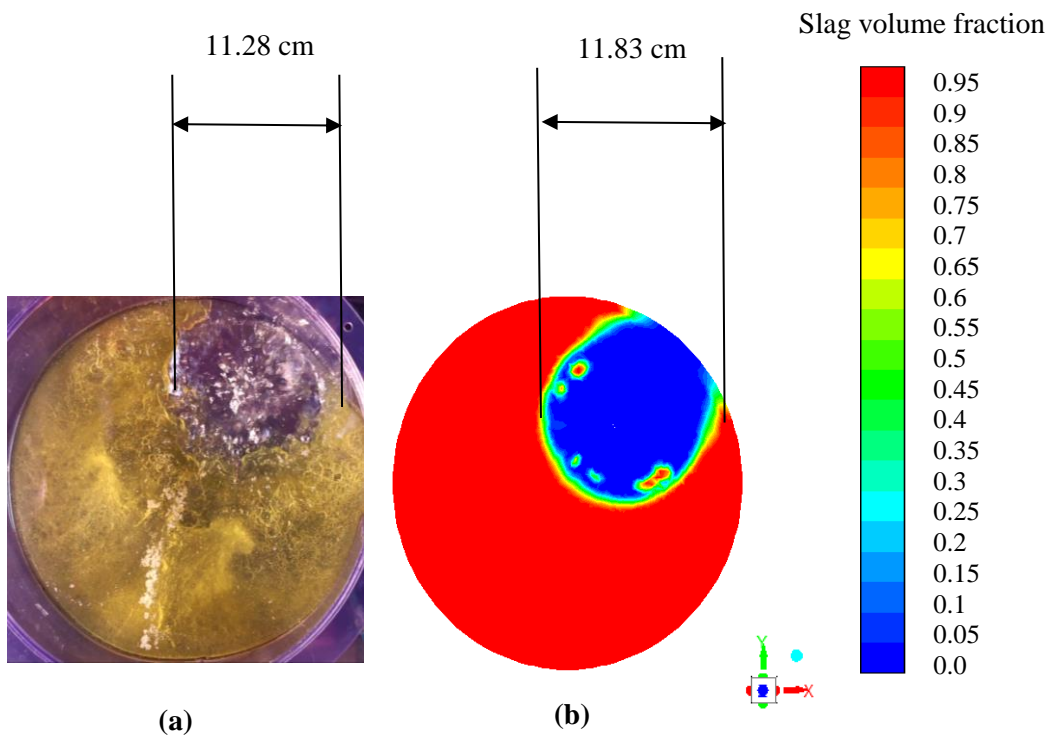


Fig. 7: The slag eye size for a gas flow rate 7.5 NL/min: (a) experimental and (b) simulation.

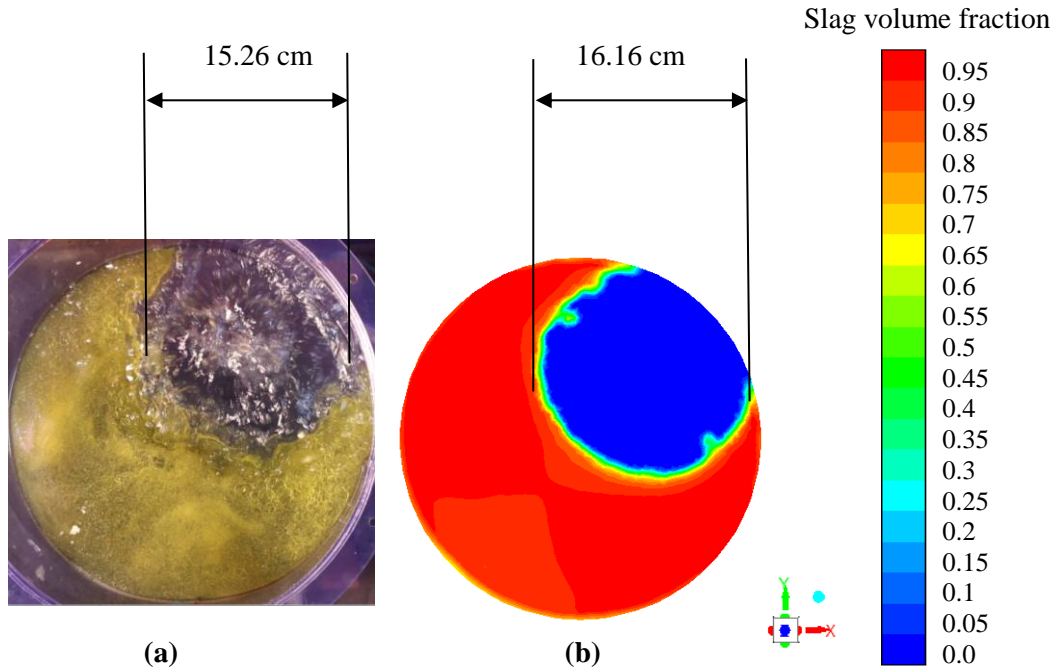


Fig. 8: The slag eye size for gas flow rate 15 NL/min: (a) experimental and (b) simulation.

The present results of slag eye area in the water model are in qualitative agreement with the experimental results of Li et al. (8) and simulations results of Liu et al. (15). Over the past decade, there had been relatively few studies on both physical and CFD modelling together in studying the slag behavior in the ladle. In the current work, the simulations results are provided with strong experimental data measured for validation and vice versa. The present work represents a first step towards modelling an industrial ladle. At this stage, a numerical model was developed and a physical model was used for validation of the numerical approach employed.

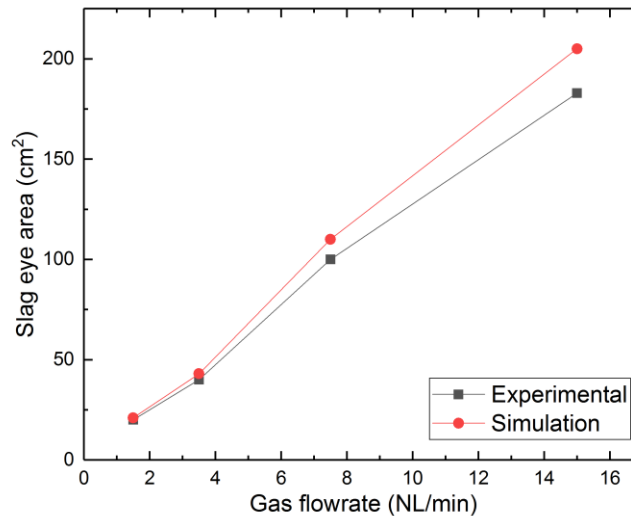


Fig. 9: Effect of the gas flow rate on the slag open-eye area for both experiments and simulations.

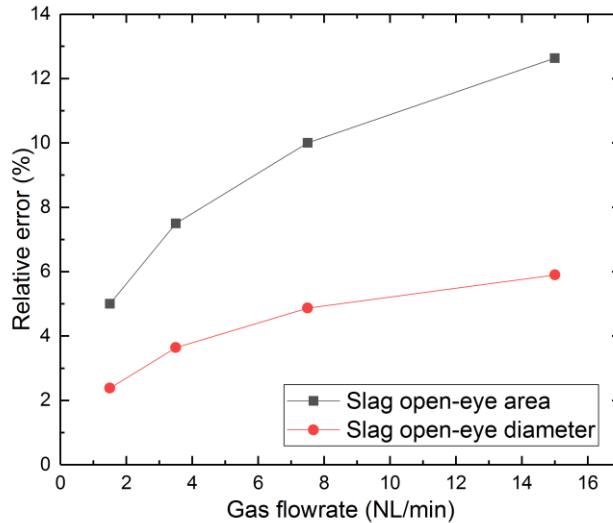


Fig. 10: Relative error of the simulated slag open-eye area and diameter in comparison to measured values.

The results provide useful guidelines for the effect of gas flow rate and position of the open eye. In view of the results, the model appears to be appropriate for its purpose and can be modified for simulating a full-scale ladle. When ready, the model can be investigating the slag eye formation with increasing number of porous plugs, altering the porous plug diameter and slag layer thickness, thus providing useful information for optimizing the alloying and gas-stirring practice at steel plant.

6. Conclusions

A one-fifth scale water model is employed to study the effect of gas flow rate on the slag eye formations. A numerical model based on Multiphase Volume of Fluid (VOF) approach is developed to simulate the multiphase flow in the gas stirred ladle and validate the present experimental results of slag eye area. From the results, it was clear that the airflow injection rate has a significant effect on the area of slag open-eye. The slag eye area increases with increase in the gas flow rate for both experiments and simulations. The slag open eye predicted by the numerical model agreed well with experimental results. The present simulation results gives a better understanding of CFD in modelling the three-phase flows in steel making ladles.

Acknowledgements

The authors are grateful for financial support from the European Commission under grant number 675715-MIMESIS - H2020-MSCA-ITN-2015 which is part of the Marie Skłodowska-Curie Actions Innovative Training Networks European Industrial Doctorate Programme. V.-V. Visuri thanks the Finnish Culture Foundation for his financial support.

References

- [1] B. Li, H. Yin, C. Q. Zhou and F. Tsukihashi, "Modeling of Three-phase Flows and Behavior of Slag/Steel Interface in an Argon Gas Stirred Ladle," *ISIJ International*, vol. 48, no. 12, pp. 1704-1711, 2008.
- [2] Y. Xie and F. Oeters, "Experimental studies on the Flow Velocity of Molten Metals in a Ladle Model at Centric Gas Blowing," *Steel Research*, vol. 63, no. 3, pp. 93-104, 1992.
- [3] J. Mandal, S. Patil, M. Madan and D. Mazumdar, "Mixing time and correlation for ladles stirred with dual porous plugs," *Metallurgical and Materials Transactions B*, vol. 36, no. 4, pp. 479-487, 2005.
- [4] K. Yonezawa and K. Schwerdtfeger, "Spout Eyes Formed by an Emerging Gas Plume at the Surface of a Slag-Covered Metal Melt," *Metallurgical and Materials Transactions B*, vol. 30, no. 413, pp. 763-772, 1999.
- [5] D. Mazumdar and J. W. Evans, "A model for estimating exposed plume eye area in steel refining ladles covered with thin slag," *Metallurgical and Materials Transactions B*, vol. 35, no. 39, pp. 400-404, 2004.

- [6] K. Krishnapisharody and G. A. Irons, "An Extended Model for Slag Eye Size in Ladle Metallurgy," *ISIJ International*, vol. 48, no. 12, pp. 1807-1809, 2008.
- [7] L. Wu, P. Valentin and D. Sichen, "Study of Open Eye formation in an Argon Stirred Ladle," *Steel Research International*, vol. 81, no. 7, pp. 440-458, 2010.
- [8] Krishnakumar Krishnapisharoday and Gordon A. Irons, "Modeling of Slag Eye Formation over a Metal Bath Due to Gas Bubbling," *Metallurgical and Materials Transactions B.*, vol. 37B, no. 5, pp. 763-772, 2006.
- [9] Z. Liu, L. Li and B. Li, "Modeling of Gas-Steel-Slag Three-Phase Flow in Ladle Metallurgy: Part 1. Physical Modeling," *ISIJ International*, vol. 57, no.11, pp. 1971-1979, 2017.
- [10] S. Ganguly and S. Chakraborty, "Numerical Investigation on Role of Bottom Gas Stirring in Controlling Thermal Stratification in Steel Ladles," *ISIJ International*, vol. 44, no.3, pp. 537-546, 2004.
- [11] S. Ganguly and S. Chakraborty, "Numerical modelling studies of flow and mixing phenomena in gas stirred steel ladles," *Ironmaking and Steelmaking*, vol. 35, no. 7, pp. 524-530, 2008.
- [12] M. Warzecha, J. Jowza, P. Warzecha, and H. Pfeifer, "Numerical and experimental investigations of steel mixing time in a130-t ladle," *Steel Research International*, vol. 79, no. 11, pp. 852-860, 2008.
- [13] J.F. Domgin, P. Gardin and M. Brunet, "Experimental and numerical investigation of gas stirred ladles," in *Proceedings of the Second International Conference on CFD in the Minerals and Process Industries*, Australia, 6-8 December, 1999.
- [14] D. Mazumdar and R.I.L. Guthrie, "The Physical and Mathematical Modelling of Gas Stirred Ladle Systems," *ISIJ International*, vol. 35, no. 1, pp. 1-20, 1995.
- [15] H. Liu, Z. Qi and M. Xu, "Numerical Simulation of Fluid Flow and Interfacial Behaviour in Three-phase Argon-Stirred Ladles with One Plug and Dual Plugs," *Steel Research International*, vol. 82, no. 4, pp. 440- 458, 2011.
- [16] M. A. Ramirez-Argaez, "Numerical Simulation of Fluid Flow and Mixing in Gas-Stirred Ladles," *Materials and Manufacturing Processes*, vol. 23, pp. 59-68, 2008.
- [17] L. Li, Z. Liu, B. Li, H. Matsuura and F. Tsukihashi, "Water Model and CFD-PBM Coupled Model of Gas-Liquid-Slag Three-Phase Flow in Ladle Metallurgy," *ISIJ International*, vol. 55, no. 7, pp. 1337-1346, 2015.
- [18] S.W.P. Cloete, J.J. Eksteen and S.M. Bradshaw, "A numerical modelling investigation into design variables influencing mixing efficiency in full scale gas stirred ladles," *Minerals Engineering*, vol. 46-47, pp. 16-24, 2013.